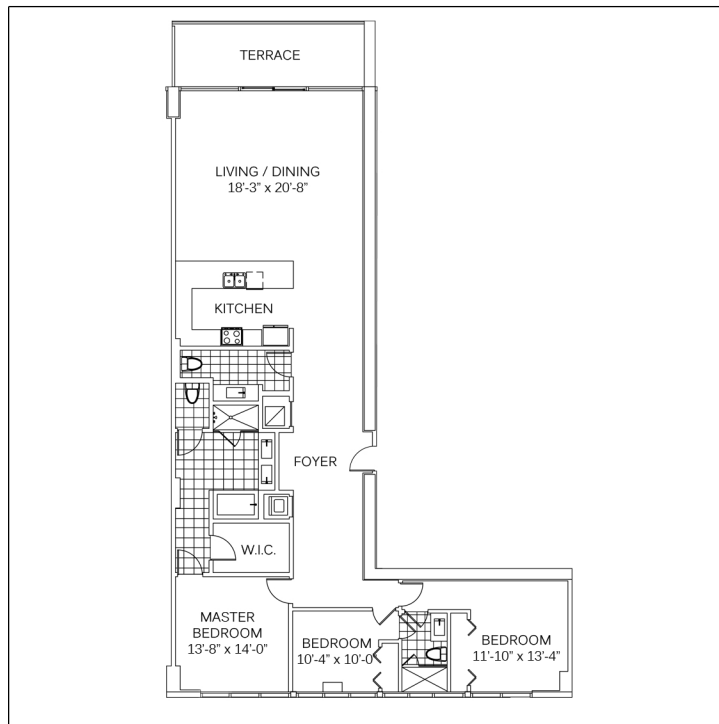
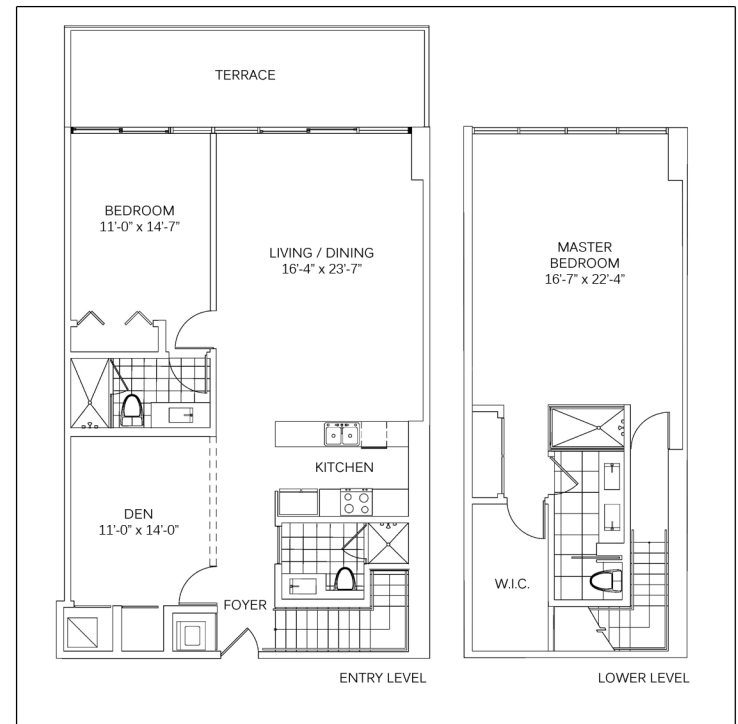


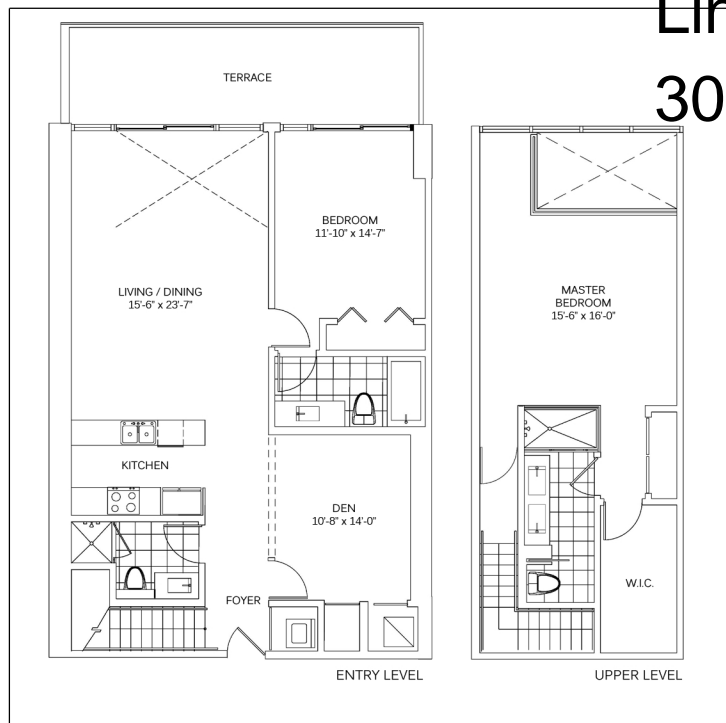
UNIT A  
3 BEDROOM / 3 BATHS  
1,872 SF UNDER A/C + 160 SF TERRACE = 2,032 SF TOTAL  
FLOORS 6 THROUGH 19



UNIT B  
3 BEDROOMS / 3 BATHS  
1,838 SF UNDER A/C + 155 SF TERRACE = 1,993 SF TOTAL  
FLOORS 6 THROUGH 19



UNIT C  
2 BEDROOMS / DEN / 3 BATHS  
(3 BEDROOM CONVERTIBLE)  
1,849 SF UNDER A/C + 226 SF TERRACE = 2,075 SF TOTAL  
ENTRY LEVEL ON FLOORS 9, 12, 16, & 19



UNIT D  
2 BEDROOMS / DEN / 3 BATHS  
(3 BEDROOM CONVERTIBLE)  
1,769 SF UNDER A/C + 226 SF TERRACE = 1,995 SF TOTAL  
ENTRY LEVEL ON FLOORS 9, 12, 16, & 19



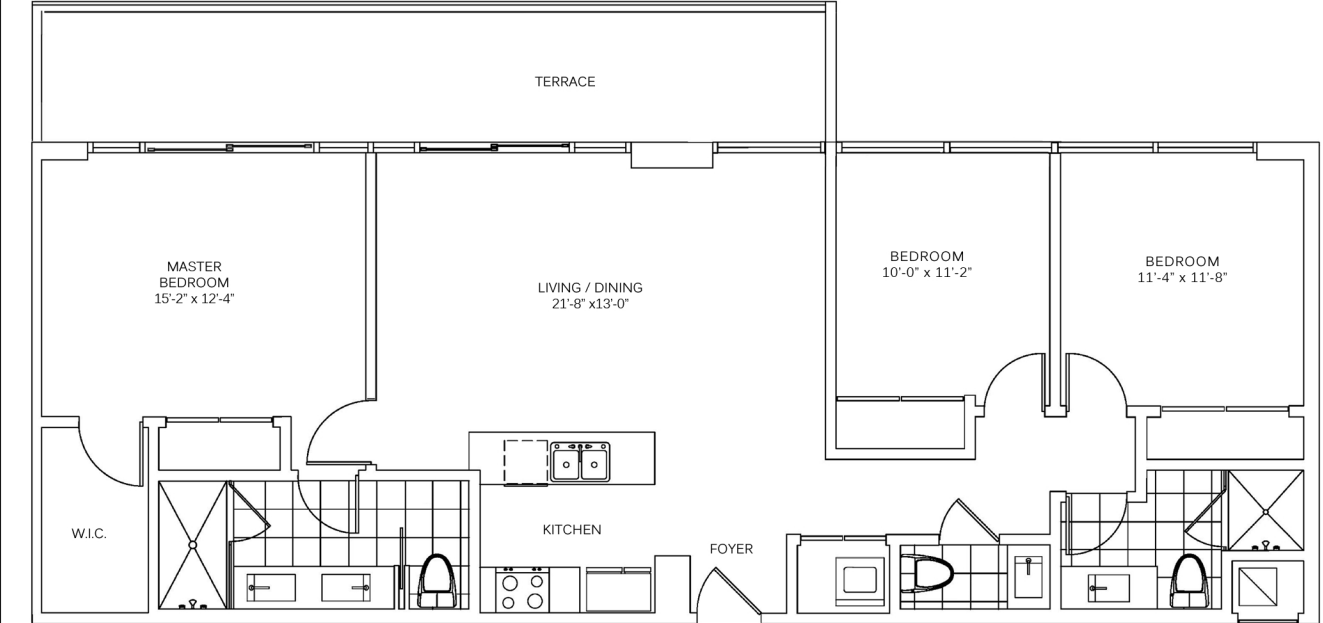
UNIT E  
2 BEDROOMS / DEN / 3 BATHS  
(3 BEDROOM CONVERTIBLE)  
1,692 SF UNDER A/C + 322 SF TERRACE = 2,014 SF TOTAL  
FLOORS 8, 10, 11, 14, 15, 17, 18, & 20



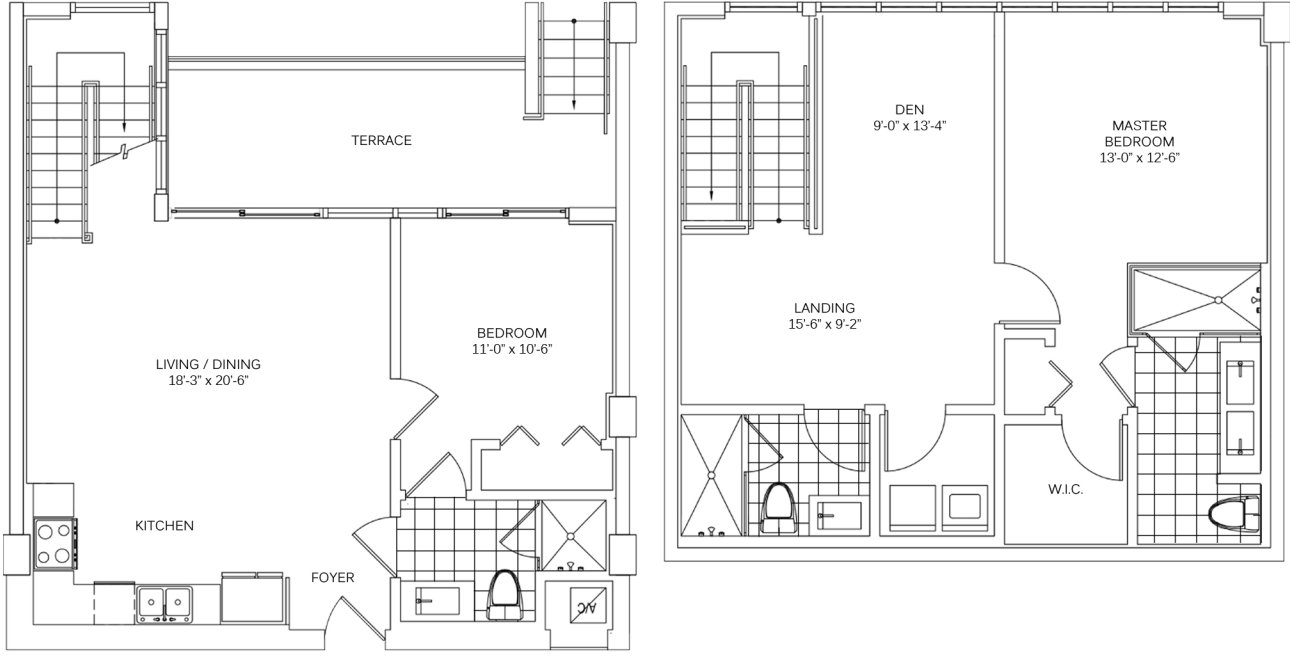
UNIT F  
1 BEDROOMS / DEN / 2 BATHS  
(2 BEDROOM CONVERTIBLE)  
1,206 SF UNDER A/C + 226 SF TERRACE = 1,432 TOTAL  
FLOORS 6 & 7

Linda G Properties - [www.Lindagproperties.com](http://www.Lindagproperties.com)  
305-335-7144 email: [linda@lindagproperties.com](mailto:linda@lindagproperties.com)

Linda G Properties - [www.LindaGproperties.com](http://www.LindaGproperties.com)  
305-335-7144 email: [lindag@lindagproperties.com](mailto:lindag@lindagproperties.com)



FLAT  
3 BEDROOMS / 2.5 BATHS  
1,350 SF UNDER A/C + 192 SF TERRACE = 1,542 SF TOTAL  
FLOORS 3 THROUGH 5



LOFT  
2 BEDROOMS / DEN / 3 BATHS  
(3 BEDROOM CONVERTIBLE)  
1,503 SF UNDER A/C + 139 SF TERRACE = 1,642 SF TOTAL  
ENTRY LEVEL ON FLOOR 1