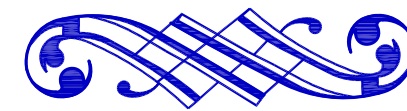




CHÂTEAU

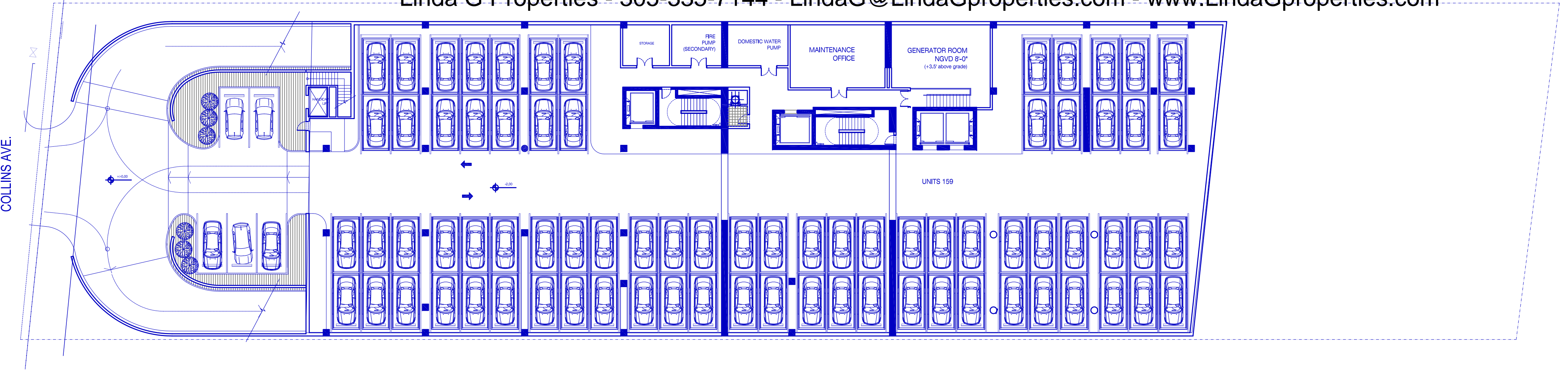
BEACH RESIDENCES

SUNNY ISLES





Linda G Properties - 305-335-7144 - [LindaG@LindaGproperties.com](mailto:LindaG@LindaGproperties.com) - [www.LindaGproperties.com](http://www.LindaGproperties.com)

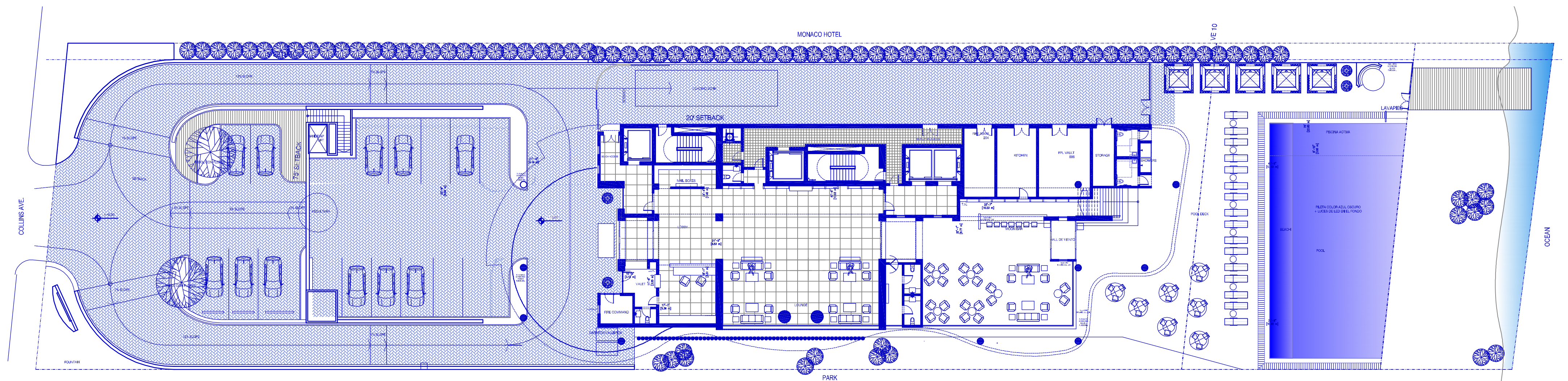


BASEMENT

REV. 27 | 03 | 12

All dimensions are approximate and all floor plans and development plans are subject to change by the developer without notice. Stated dimensions are measured to the exterior boundaries of the exterior walls and the centerline of interior demising walls and in fact vary from the dimensions that would be determined by using the description and definition of the "Unit" set forth in the Declaration (which generally only includes the interior air space between the perimeter walls and excludes interior structural components).The seller reserves the absolute right, in its sole judgment and discretion, to substitute appliances, materials, fixtures, and equipment of equal or great quality or value for those specified.





Linda G Properties - 305-335-7144 - [LindaG@LindaGproperties.com](mailto:LindaG@LindaGproperties.com) - [www.LindaGproperties.com](http://www.LindaGproperties.com)

## GROUND FLOOR

REV. 27 | 03 | 12

All dimensions are approximate and all floor plans and development plans are subject to change by the developer without notice. Stated dimensions are measured to the exterior boundaries of the exterior walls and the centerline of interior demising walls and in fact vary from the dimensions that would be determined by using the description and definition of the "Unit" set forth in the Declaration (which generally only includes the interior air space between the perimeter walls and excludes interior structural components). The seller reserves the absolute right, in its sole judgment and discretion, to substitute appliances, materials, fixtures, and equipment of equal or great quality or value for those specified.

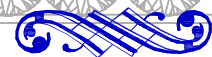




# CHÂTEAU

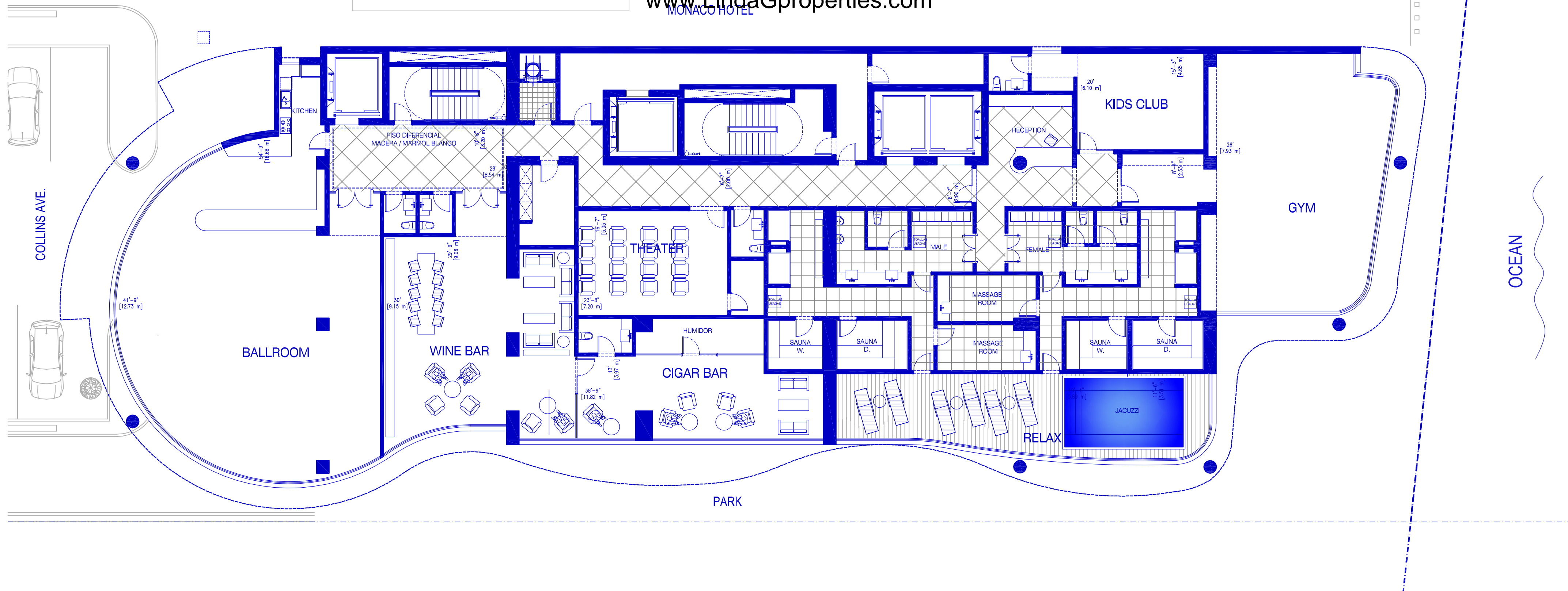
BEACH RESIDENCES

SUNNY ISLES



Linda G Properties - 305-335-7144 - LindaG@LindaGproperties.com -  
www.LindaGproperties.com

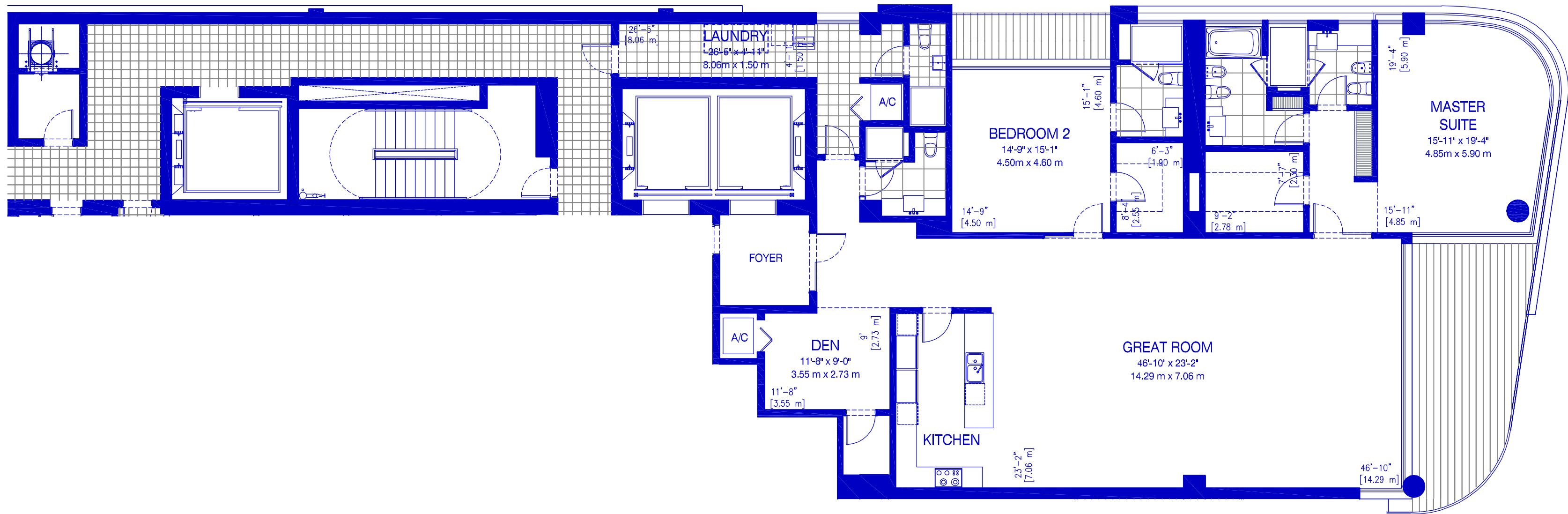
MONACO HOTEL



## 2ND LEVEL

REV. 27 | 03 | 12

All dimensions are approximate and all floor plans and development plans are subject to change by the developer without notice. Stated dimensions are measured to the exterior boundaries of the exterior walls and the centerline of interior demising walls and in fact vary from the dimensions that would be determined by using the description and definition of the "Unit" set forth in the Declaration (which generally only includes the interior air space between the perimeter walls and excludes interior structural components). The seller reserves the absolute right, in its sole judgment and discretion, to substitute appliances, materials, fixtures, and equipment of equal or great quality or value for those specified.

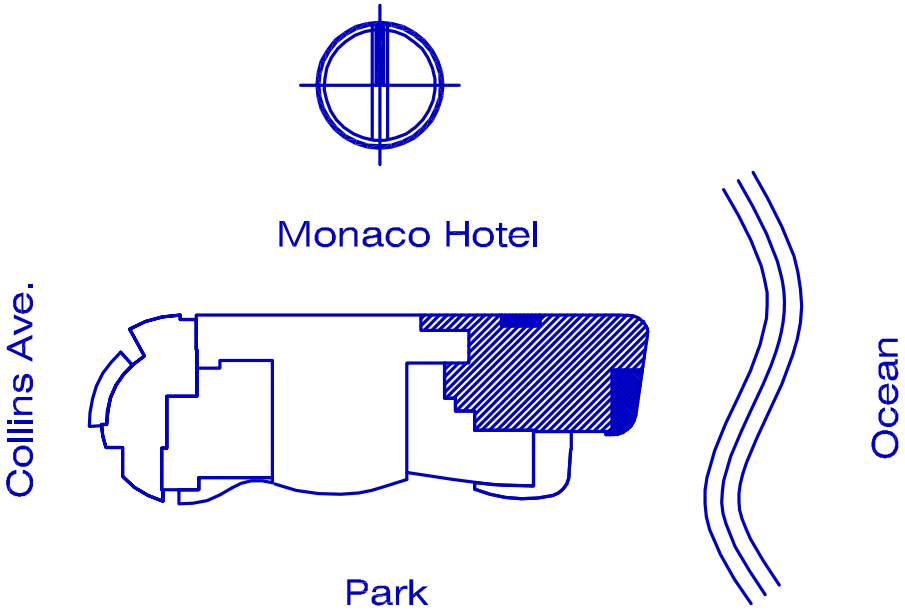


Linda G Properties - 305-335-7144 - [LindaG@LindaGproperties.com](mailto:LindaG@LindaGproperties.com) - [www.LindaGproperties.com](http://www.LindaGproperties.com)

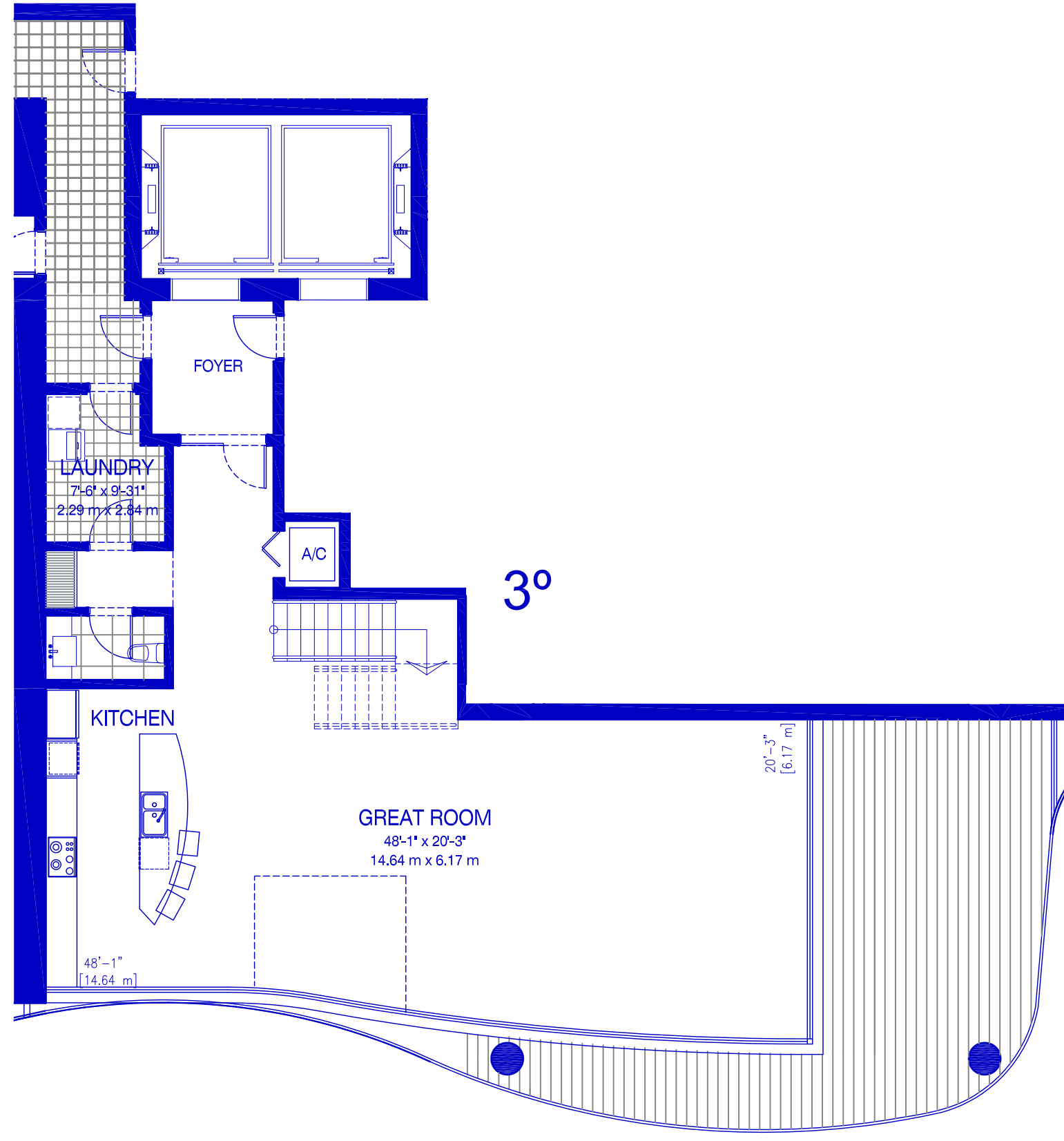
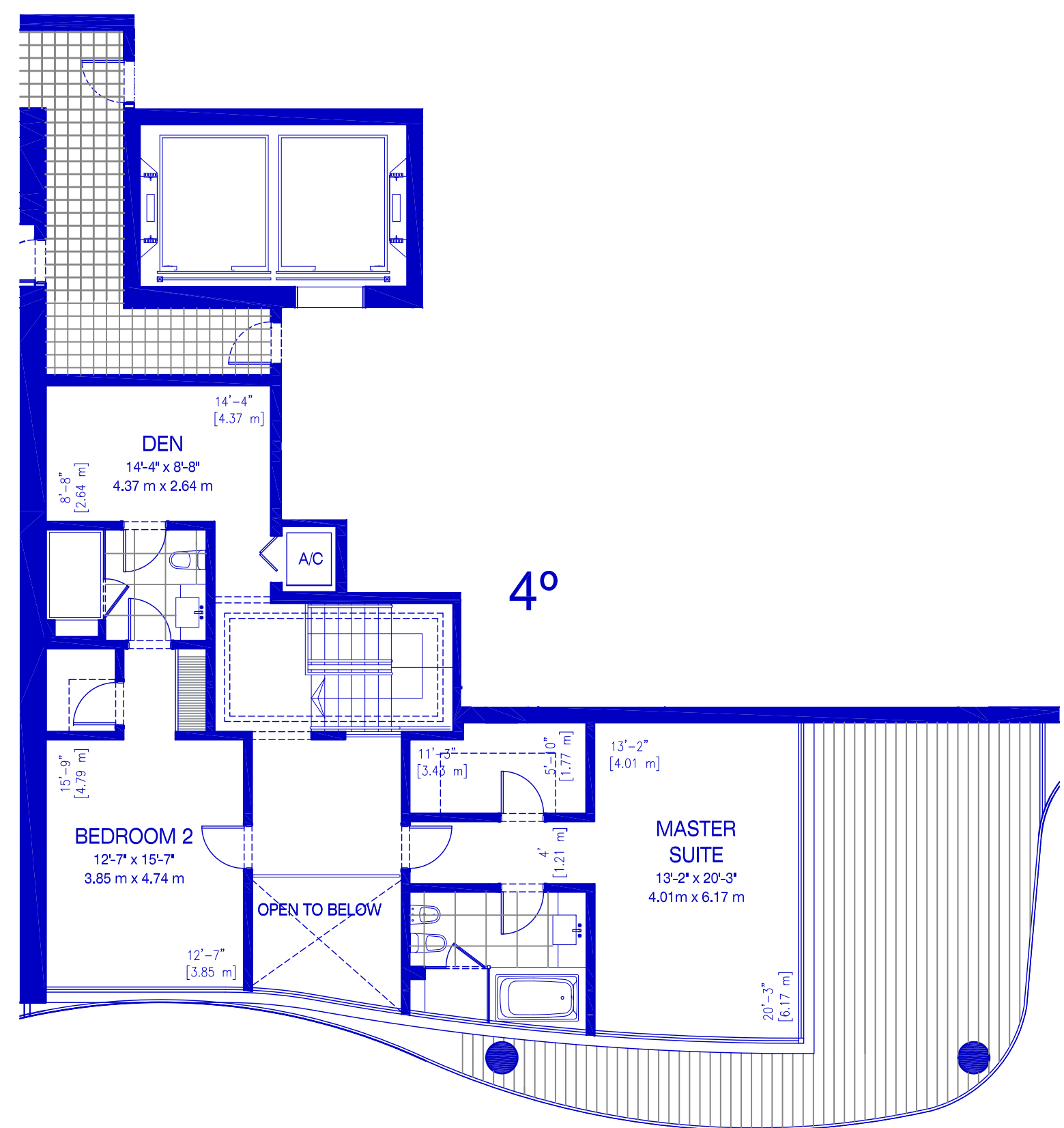
3° TO 4°  
RESIDENCE 01  
2 BEDROOMS + DEN / 2-1/2 BATH

Interior:	2,926 SF	272.00 M²
Exterior:	299 SF	28.00 M²
Total:	3,225 SF	300 M²

REV. 27 | 03 | 12



All dimensions are approximate and all floor plans and development plans are subject to change by the developer without notice. Stated dimensions are measured to the exterior boundaries of the exterior walls and the centerline of interior demising walls and in fact vary from the dimensions that would be determined by using the description and definition of the "Unit" set forth in the Declaration (which generally only includes the interior air space between the perimeter walls and excludes interior structural components).The seller reserves the absolute right, in its sole judgment and discretion, to substitute appliances, materials, fixtures, and equipment of equal or great quality or value for those specified.

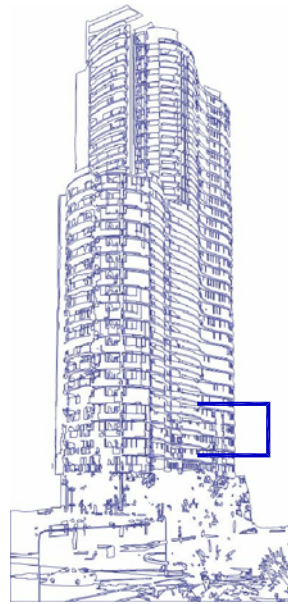


Linda G Properties - 305-335-7144 - LindaG@LindaGproperties.com - www.LindaGproperties.com

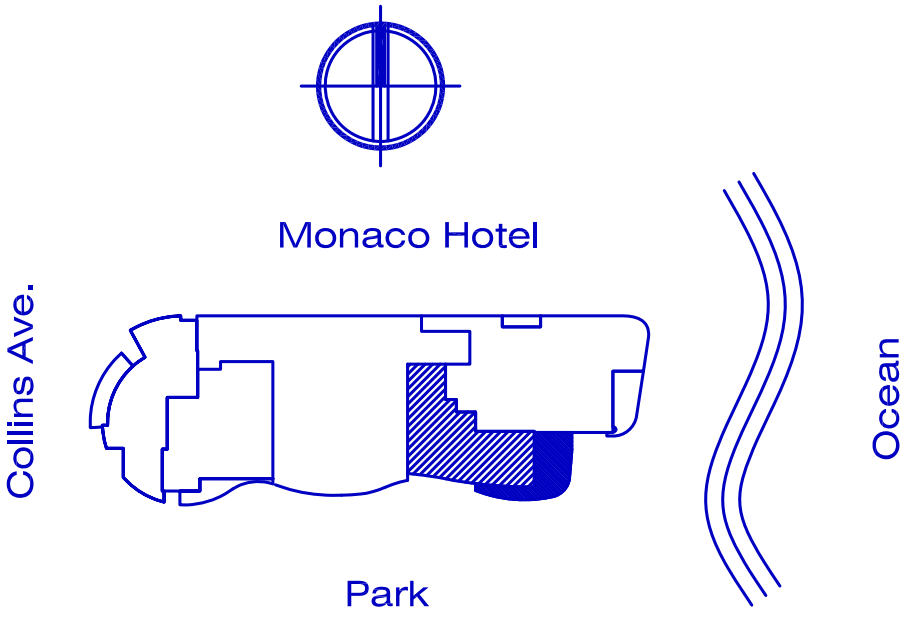
3° & 4°  
RESIDENCE 02  
2 BEDROOMS + DEN / 2-1/2 BATH

Interior:	2,691 SF	250 M²
Exterior:	871 SF	81 M²
Total:	3,562 SF	331 M²

REV. 27 | 03 | 12



RESIDENCE 02



All dimensions are approximate and all floor plans and development plans are subject to change by the developer without notice. Stated dimensions are measured to the exterior boundaries of the exterior walls and the centerline of interior demising walls and in fact vary from the dimensions that would be determined by using the description and definition of the "Unit" set forth in the Declaration (which generally only includes the interior air space between the perimeter walls and excludes interior structural components).The seller reserves the absolute right, in its sole judgment and discretion, to substitute appliances, materials, fixtures, and equipment of equal or great quality or value for those specified.

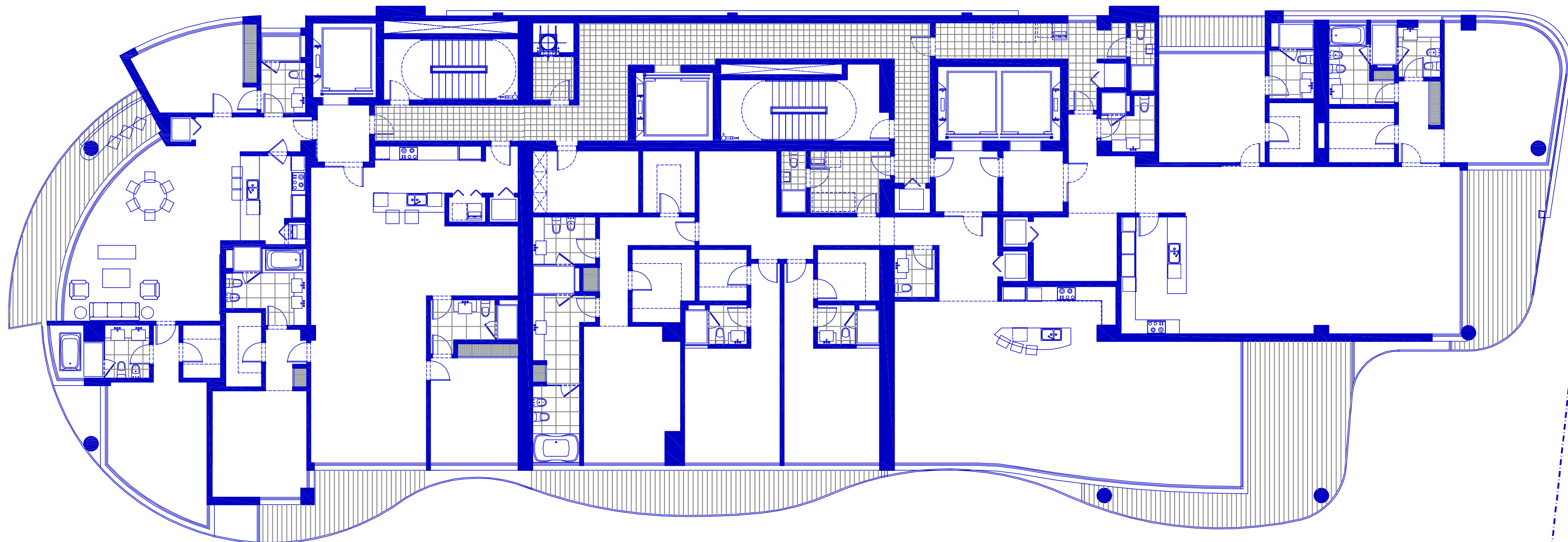




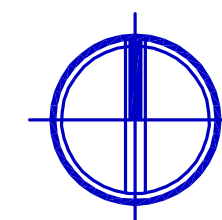
# CHÂTEAU

BEACH RESIDENCES

SUNNY ISLES

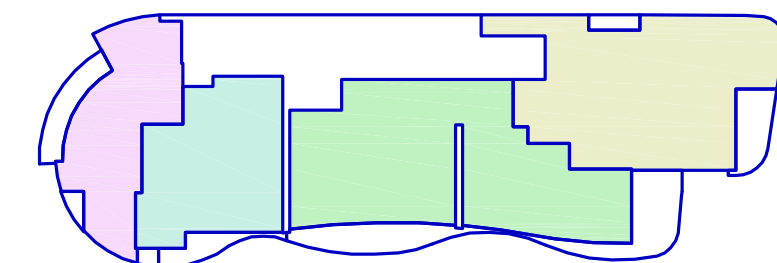


Linda G Properties - 305-335-7144 - LindaG@LindaGproperties.com - www.LindaGproperties.com



Monaco Hotel

Collins Ave.



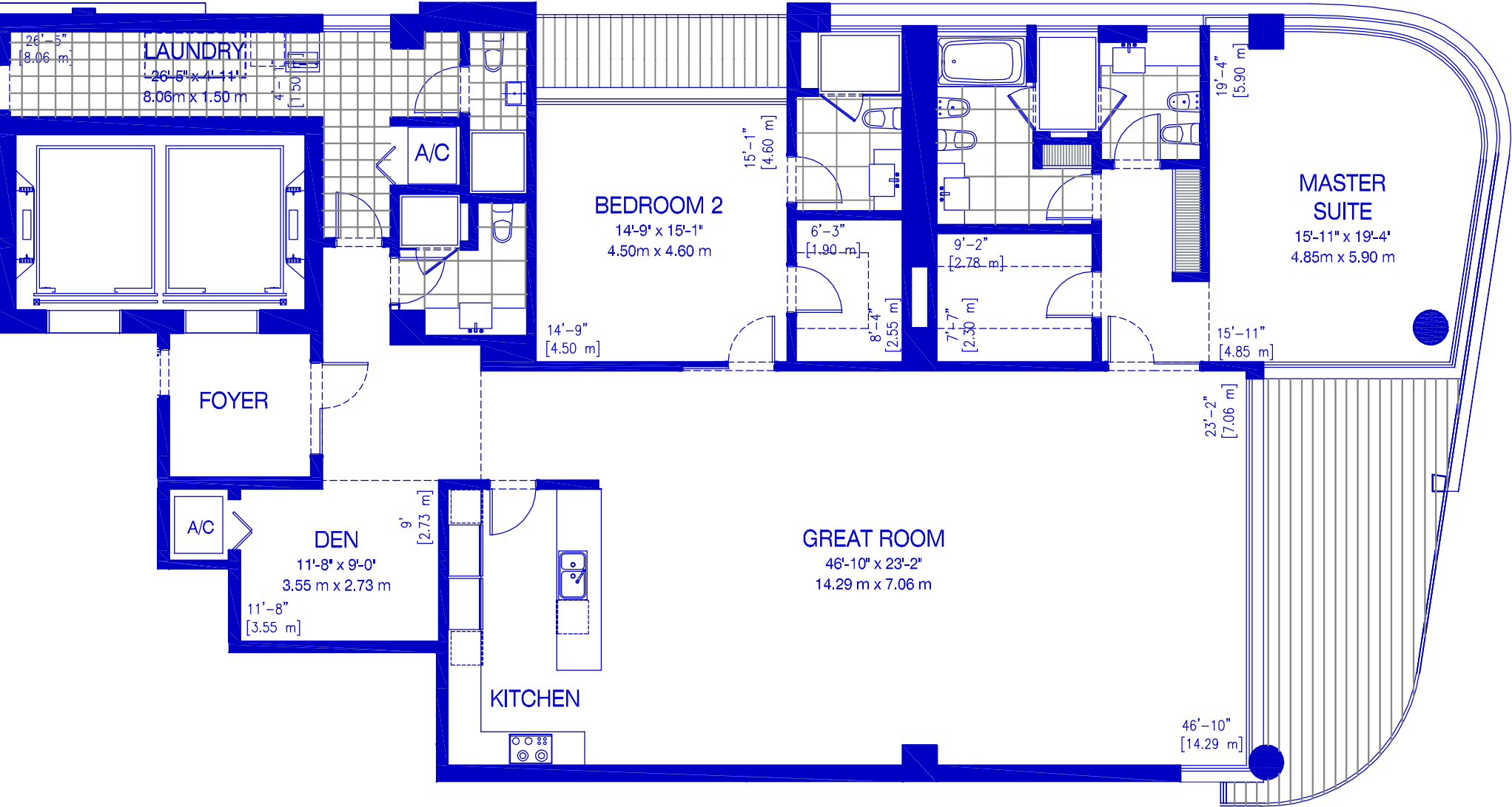
Park

Ocean

LEVEL  
5° TO 11°

REV. 27 | 03 | 12

All dimensions are approximate and all floor plans and development plans are subject to change by the developer without notice. Stated dimensions are measured to the exterior boundaries of the exterior walls and the centerline of interior demising walls and in fact vary from the dimensions that would be determined by using the description and definition of the "Unit" set forth in the Declaration (which generally only includes the interior air space between the perimeter walls and excludes interior structural components). The seller reserves the absolute right, in its sole judgment and discretion, to substitute appliances, materials, fixtures, and equipment of equal or great quality or value for those specified.

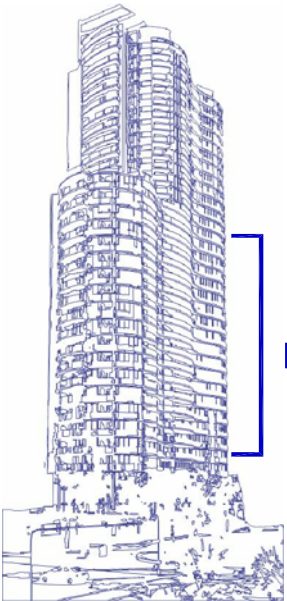


Linda G Properties - 305-335-7144 - [LindaG@LindaGproperties.com](mailto:LindaG@LindaGproperties.com) - [www.LindaGproperties.com](http://www.LindaGproperties.com)

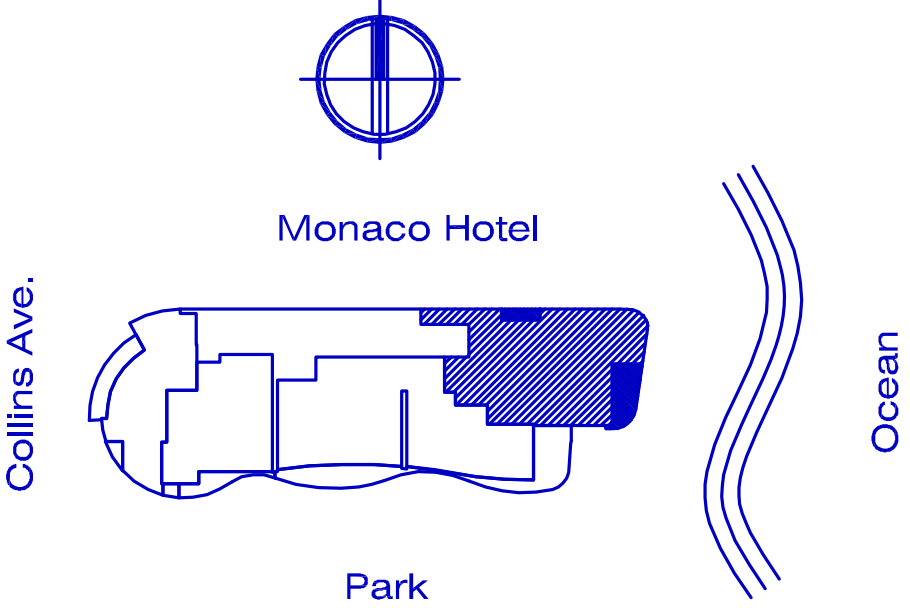
5° TO 22°  
RESIDENCE 01  
2 BEDROOMS + DEN / 4 &1/2 BATH

Interior:	2,890 SF	268 M²
Exterior:	301 SF	28 M²
Total:	3,191 SF	296 M²

REV. 27 | 03 | 12



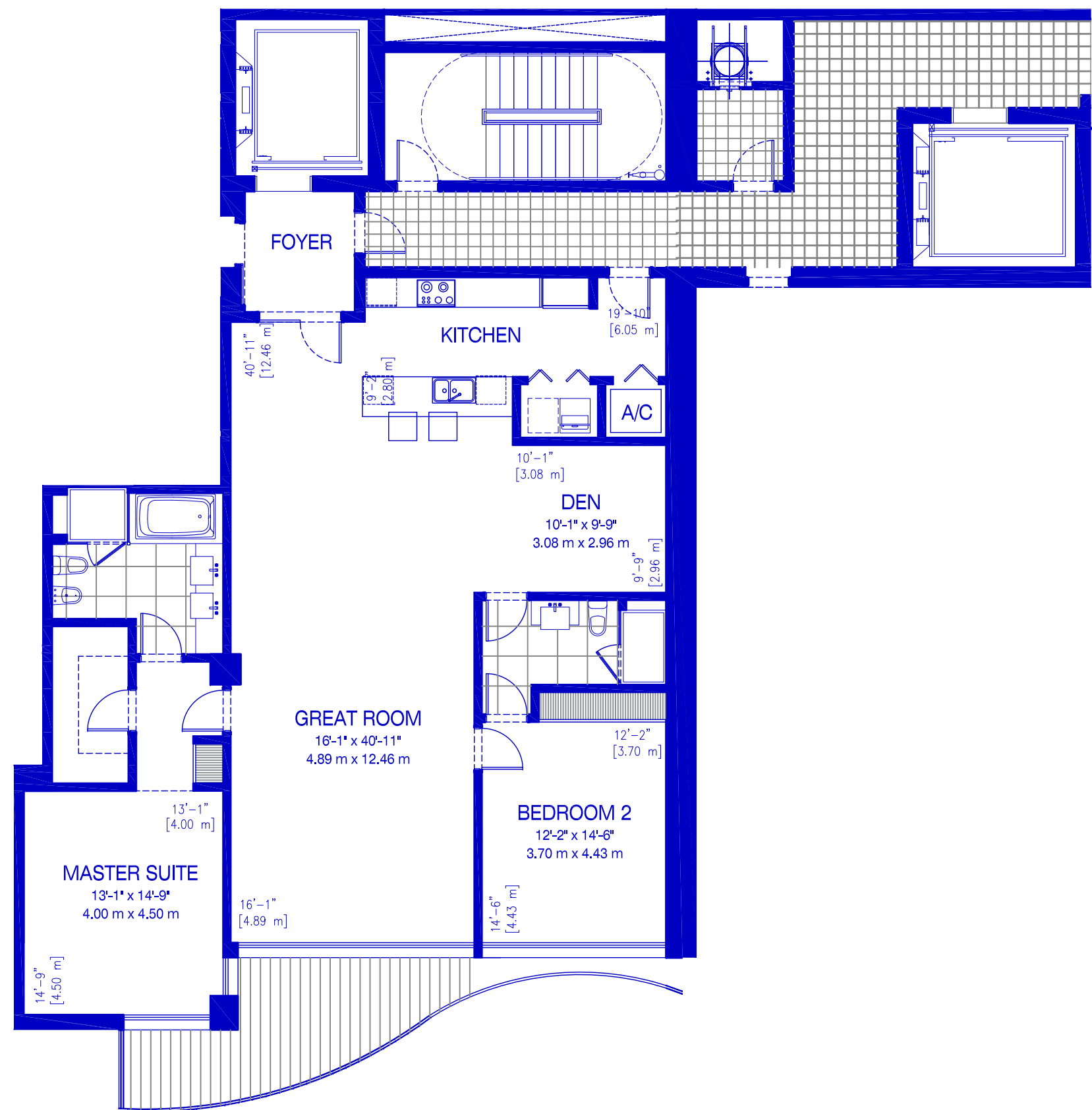
RESIDENCES 01



All dimensions are approximate and all floor plans and development plans are subject to change by the developer without notice. Stated dimensions are measured to the exterior boundaries of the exterior walls and the centerline of interior demising walls and in fact vary from the dimensions that would be determined by using the description and definition of the "Unit" set forth in the Declaration (which generally only includes the interior air space between the perimeter walls and excludes interior structural components).The seller reserves the absolute right, in its sole judgment and discretion, to substitute appliances, materials, fixtures, and equipment of equal or great quality or value for those specified.





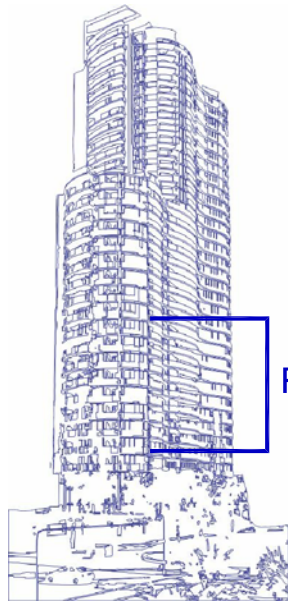


Linda G Properties - 305-335-7144 - LindaG@LindaGproperties.com - www.LindaGproperties.com

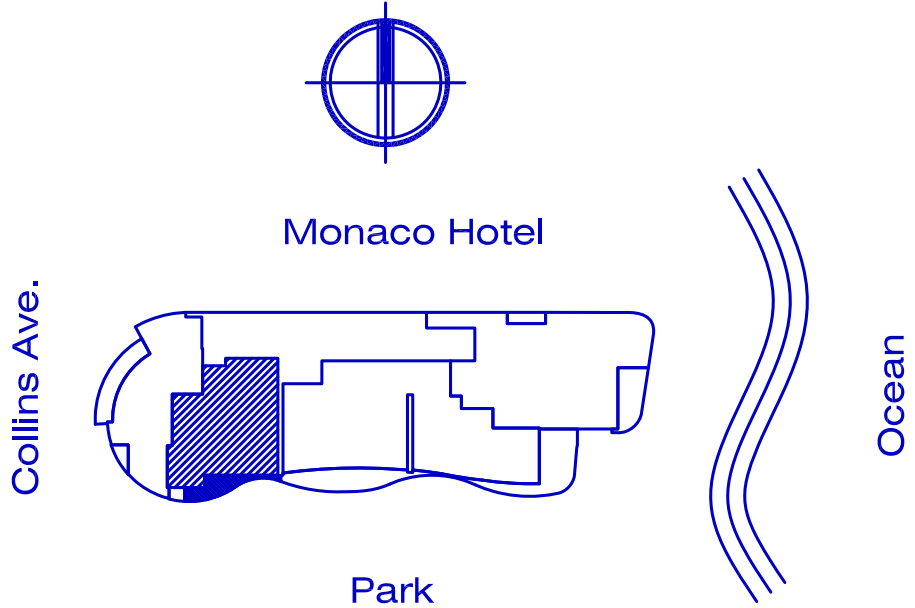
3° TO 11°  
RESIDENCE 03  
2 BEDROOMS / 2 BATH

Interior:	1,742 SF	162 M²
Exterior:	137 SF	13 M²
Total:	1,879 SF	175 M²

REV. 27 | 03 | 12

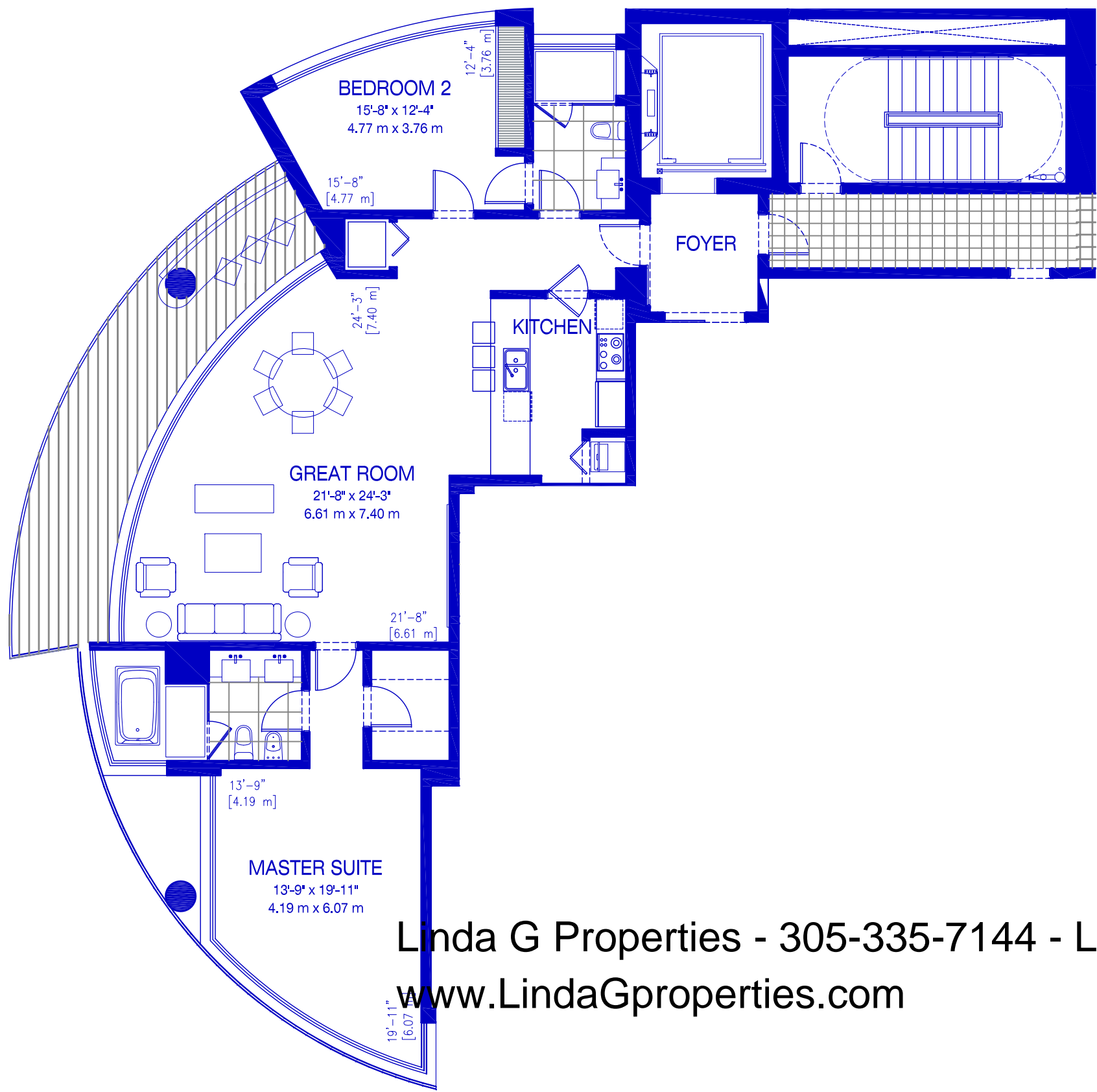


RESIDENCES 03



All dimensions are approximate and all floor plans and development plans are subject to change by the developer without notice. Stated dimensions are measured to the exterior boundaries of the exterior walls and the centerline of interior demising walls and in fact vary from the dimensions that would be determined by using the description and definition of the "Unit" set forth in the Declaration (which generally only includes the interior air space between the perimeter walls and excludes interior structural components).The seller reserves the absolute right, in its sole judgment and discretion, to substitute appliances, materials, fixtures, and equipment of equal or great quality or value for those specified.



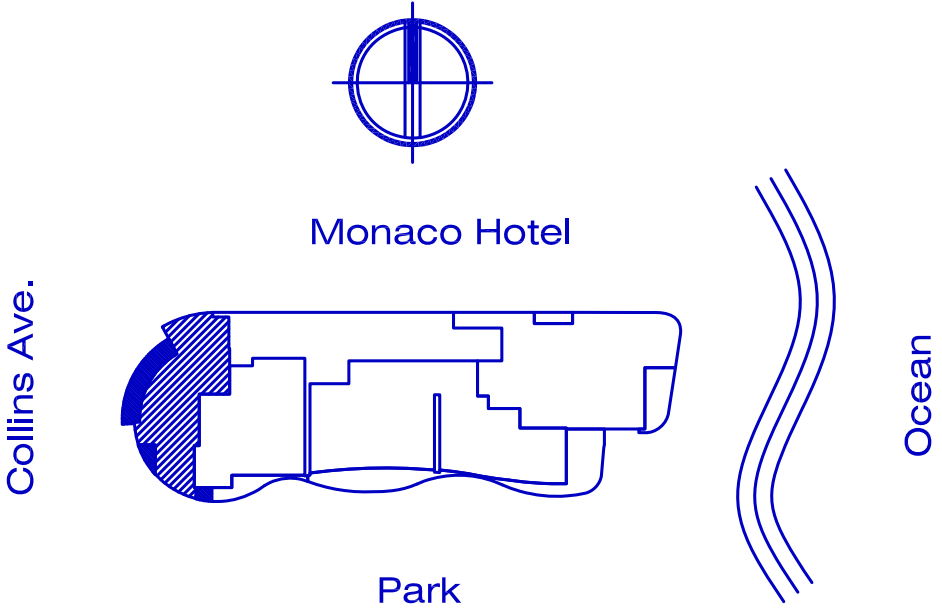


Linda G Properties - 305-335-7144 - [LindaG@LindaGproperties.com](mailto:LindaG@LindaGproperties.com) - [www.LindaGproperties.com](http://www.LindaGproperties.com)

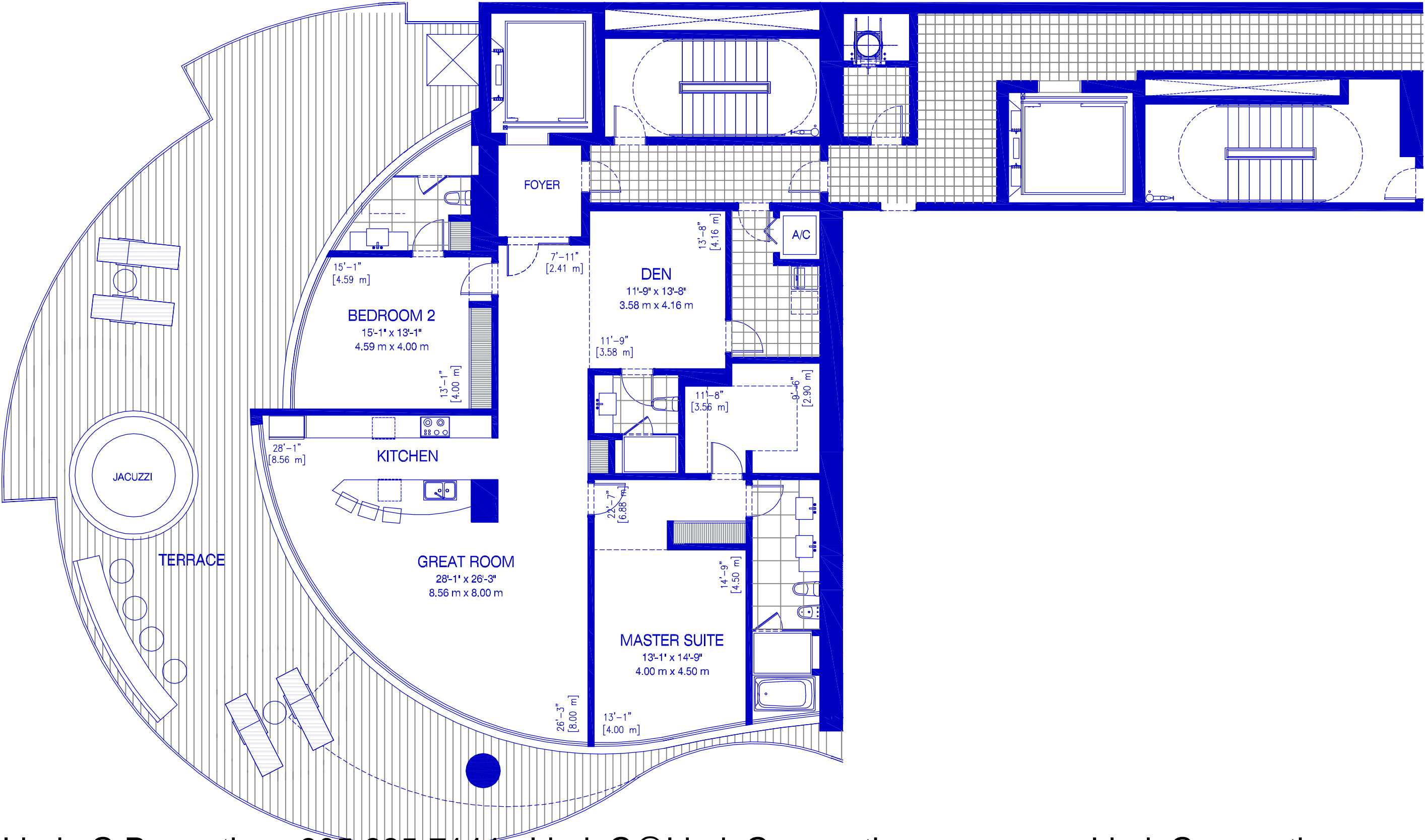
3° TO 11°  
RESIDENCE 04  
2 BEDROOMS / 2 BATH

Interior:	1,488 SF	138 M <sup>2</sup>
Exterior:	190 SF	18 M <sup>2</sup>
Total:	1,678 SF	156 M <sup>2</sup>

REV. 27 | 03 | 12



All dimensions are approximate and all floor plans and development plans are subject to change by the developer without notice. Stated dimensions are measured to the exterior boundaries of the exterior walls and the centerline of interior demising walls and in fact vary from the dimensions that would be determined by using the description and definition of the "Unit" set forth in the Declaration (which generally only includes the interior air space between the perimeter walls and excludes interior structural components).The seller reserves the absolute right, in its sole judgment and discretion, to substitute appliances, materials, fixtures, and equipment of equal or great quality or value for those specified.



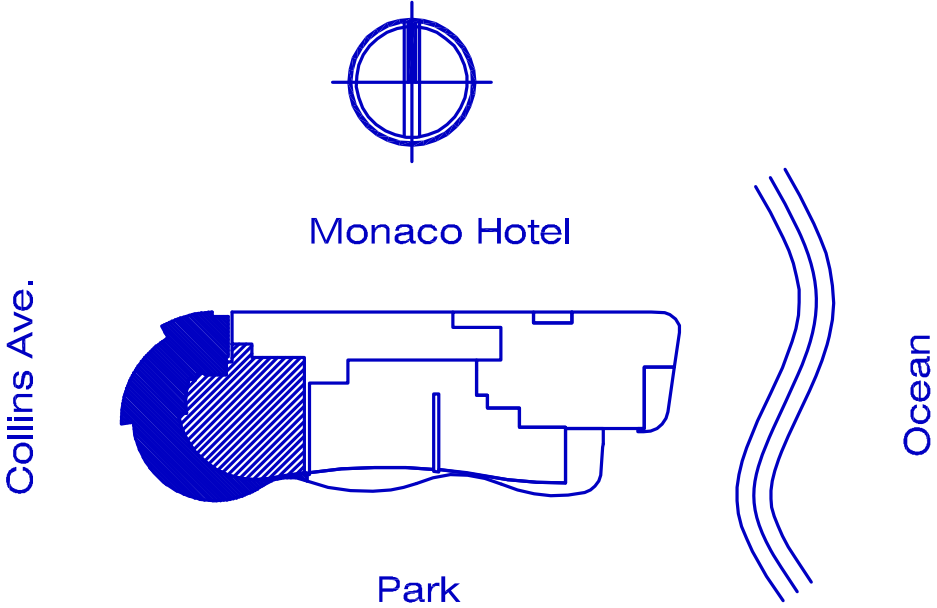
Linda G Properties - 305-335-7144 - [LindaG@LindaGproperties.com](mailto:LindaG@LindaGproperties.com) - [www.LindaGproperties.com](http://www.LindaGproperties.com)

LEVEL 12°

3 BEDROOMS + DEN / 4 & 1/2 BATH

Interior:	4,219 SF	392 M²
Exterior:	1,840 SF	171 M²
Total:	6,059 SF	563 M²

REV. 27 | 03 | 12



All dimensions are approximate and all floor plans and development plans are subject to change by the developer without notice. Stated dimensions are measured to the exterior boundaries of the exterior walls and the centerline of interior demising walls and in fact vary from the dimensions that would be determined by using the description and definition of the "Unit" set forth in the Declaration (which generally only includes the interior air space between the perimeter walls and excludes interior structural components).The seller reserves the absolute right, in its sole judgment and discretion, to substitute appliances, materials, fixtures, and equipment of equal or great quality or value for those specified.

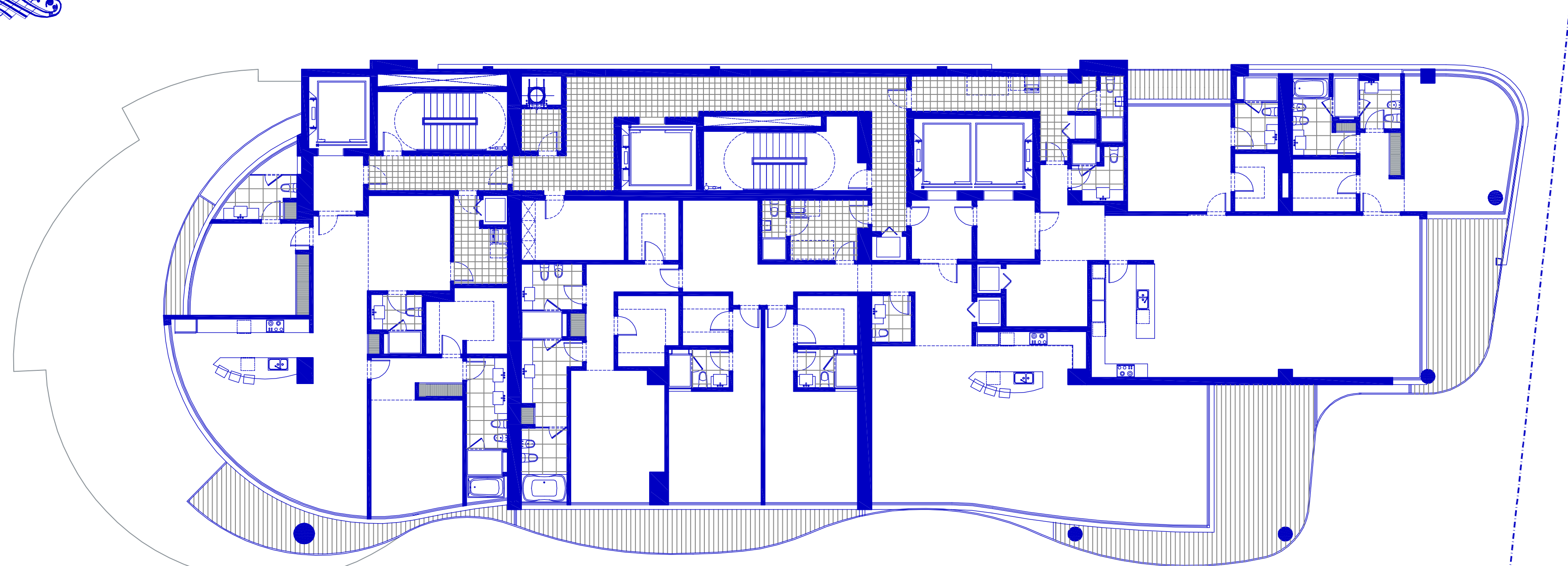




# CHÂTEAU

BEACH RESIDENCES

SUNNY ISLES

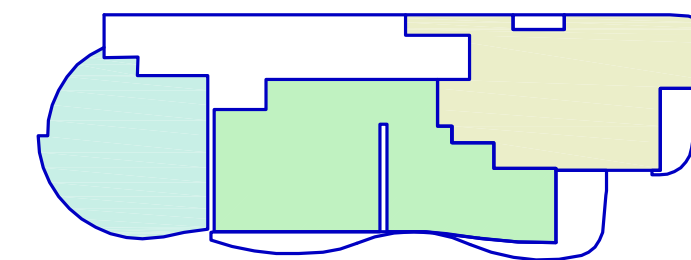


Linda G Properties - 305-335-7144 - LindaG@LindaGproperties.com - www.LindaGproperties.com



Monaco Hotel

Collins Ave.



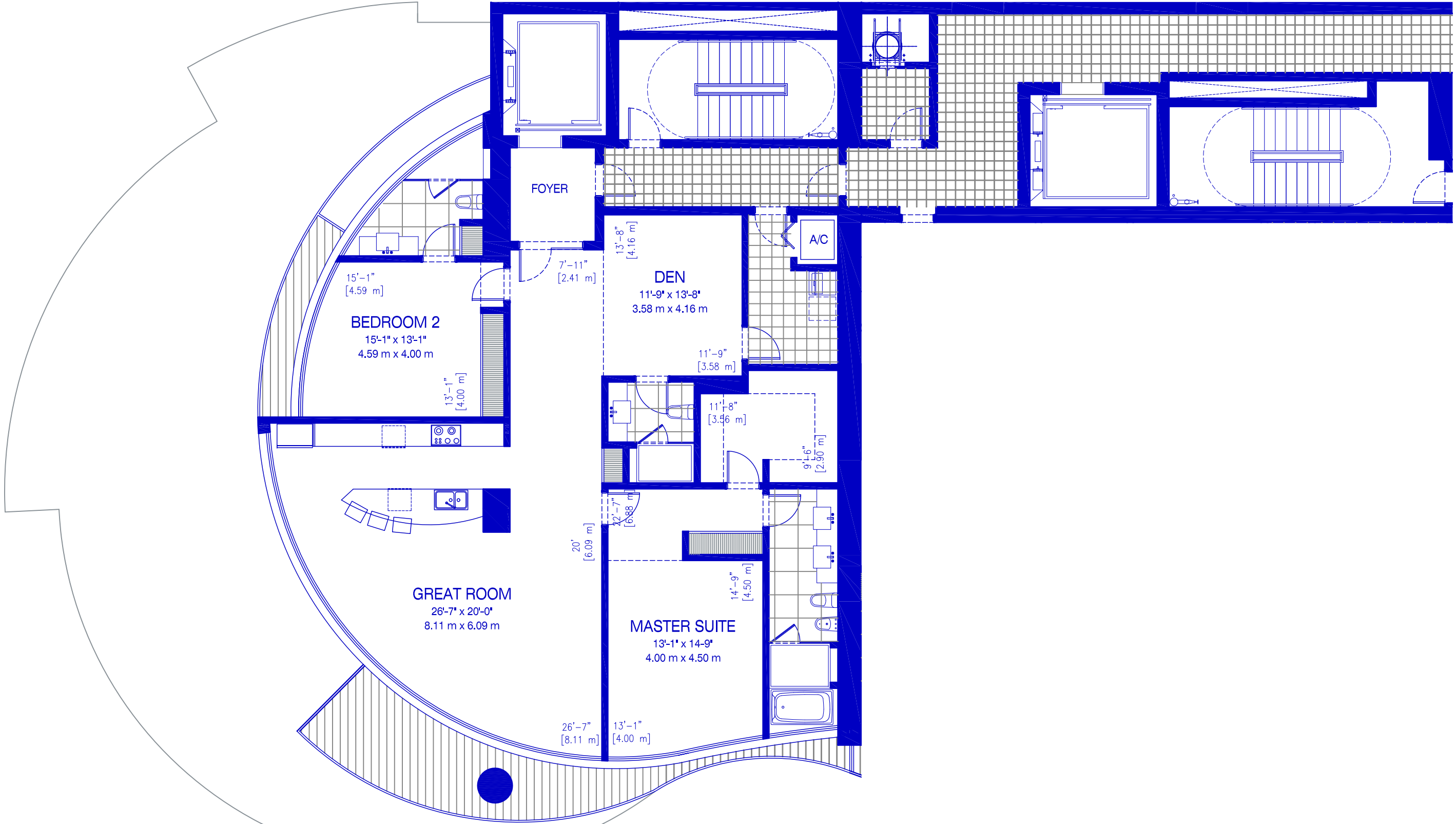
Park

Ocean

LEVEL  
14° TO 22°  
(NOT INCLUDING 13°)

REV. 27 | 03 | 12

All dimensions are approximate and all floor plans and development plans are subject to change by the developer without notice. Stated dimensions are measured to the exterior boundaries of the exterior walls and the centerline of interior demising walls and in fact vary from the dimensions that would be determined by using the description and definition of the "Unit" set forth in the Declaration (which generally only includes the interior air space between the perimeter walls and excludes interior structural components). The seller reserves the absolute right, in its sole judgment and discretion, to substitute appliances, materials, fixtures, and equipment of equal or great quality or value for those specified.

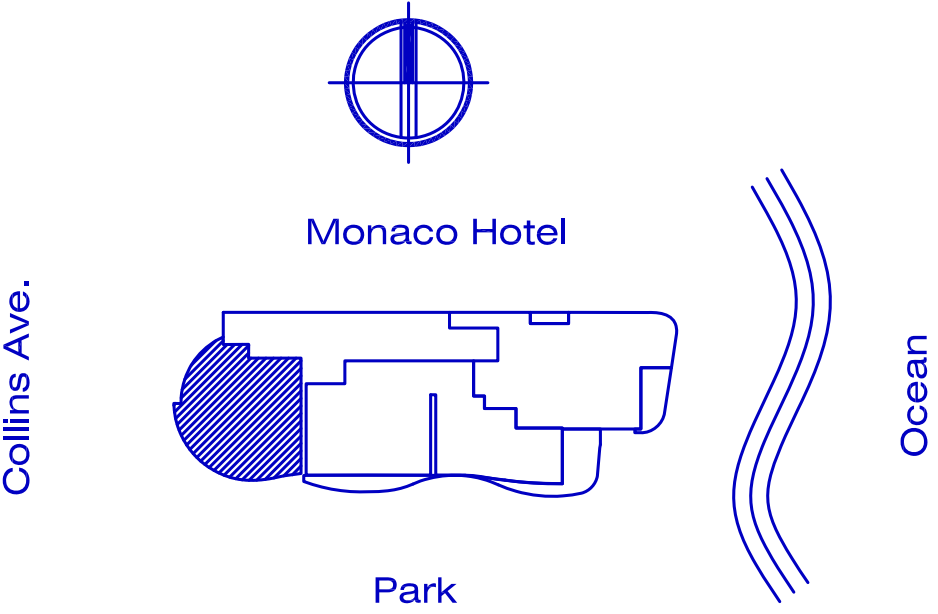


Linda G Properties - 305-335-7144 - [LindaG@LindaGproperties.com](mailto:LindaG@LindaGproperties.com) - [www.LindaGproperties.com](http://www.LindaGproperties.com)

14° TO 23°  
RESIDENCE 03  
2 BEDROOMS / 2 BATH

Interior:	2,109 SF	196 M <sup>2</sup>
Exterior:	183 SF	17 M <sup>2</sup>
Total:	2,292 SF	213 M <sup>2</sup>

REV. 27 | 03 | 12



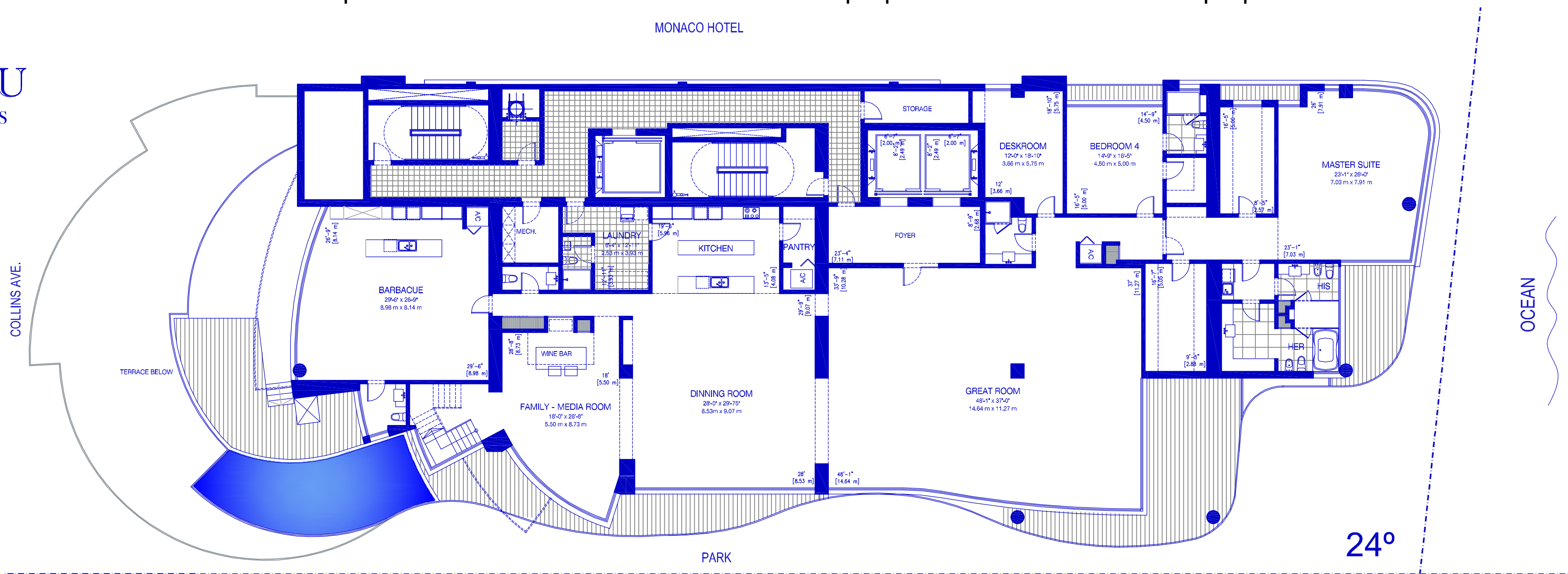
All dimensions are approximate and all floor plans and development plans are subject to change by the developer without notice. Stated dimensions are measured to the exterior boundaries of the exterior walls and the centerline of interior demising walls and in fact vary from the dimensions that would be determined by using the description and definition of the "Unit" set forth in the Declaration (which generally only includes the interior air space between the perimeter walls and excludes interior structural components).The seller reserves the absolute right, in its sole judgment and discretion, to substitute appliances, materials, fixtures, and equipment of equal or great quality or value for those specified.





Linda G Properties - 305-335-7144 - LindaG@LindaGproperties.com - www.LindaGproperties.com

MONACO HOTEL

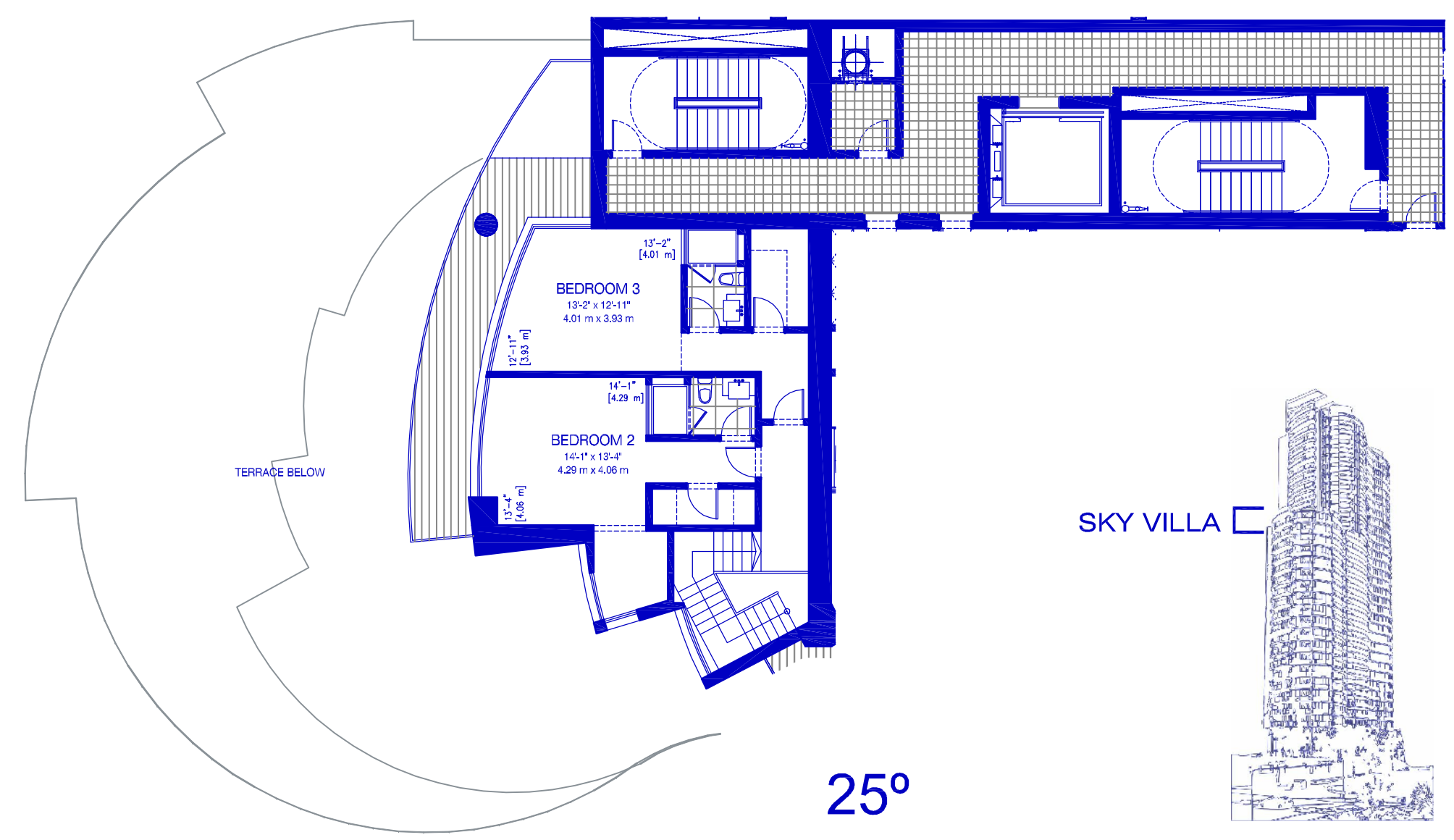


RESIDENCE COLLECTION  
SKY VILLA LEVEL 24° & 25°

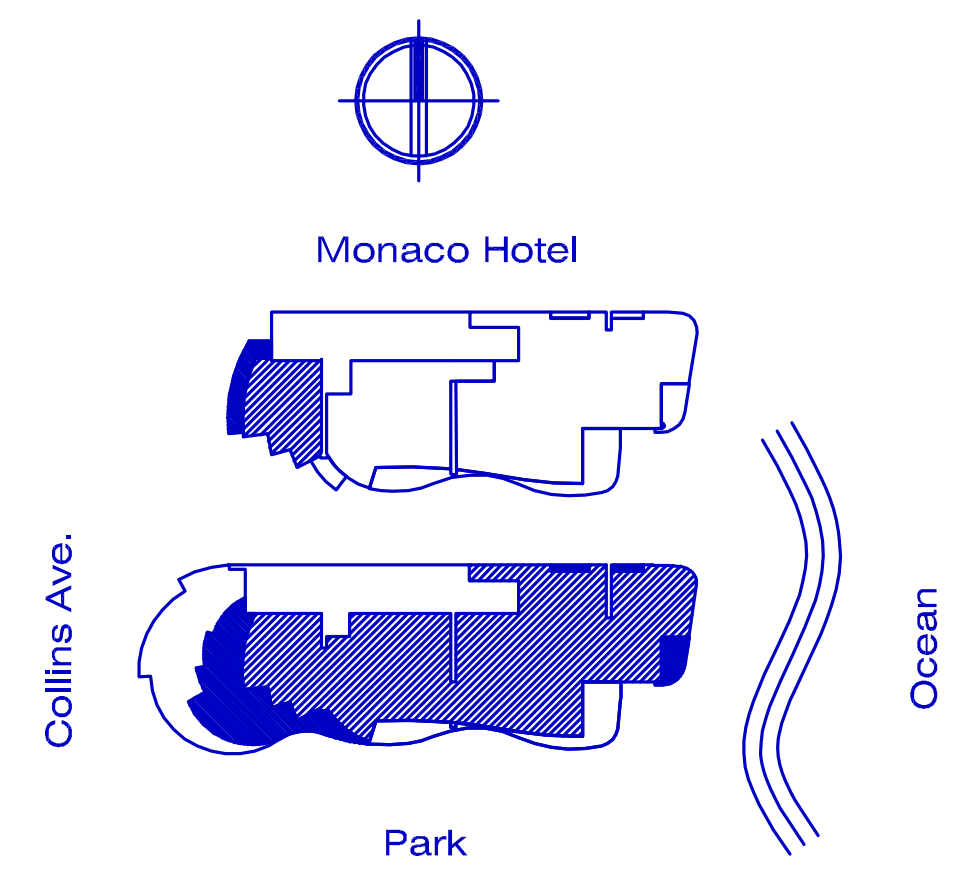
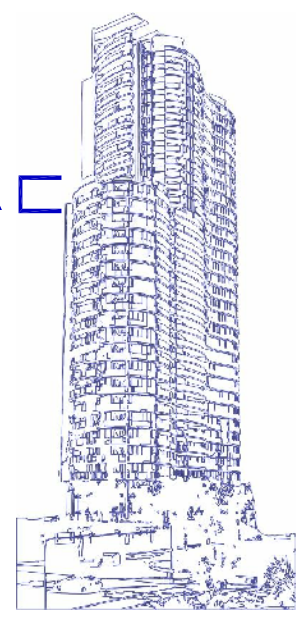
4 BEDROOMS / 6 + (3) 1/2 BATH

Interior:	8,557 SF	795 M <sup>2</sup>
Exterior:	2,292 SF	213 M <sup>2</sup>
Total:	10,849 SF	1,008 M <sup>2</sup>

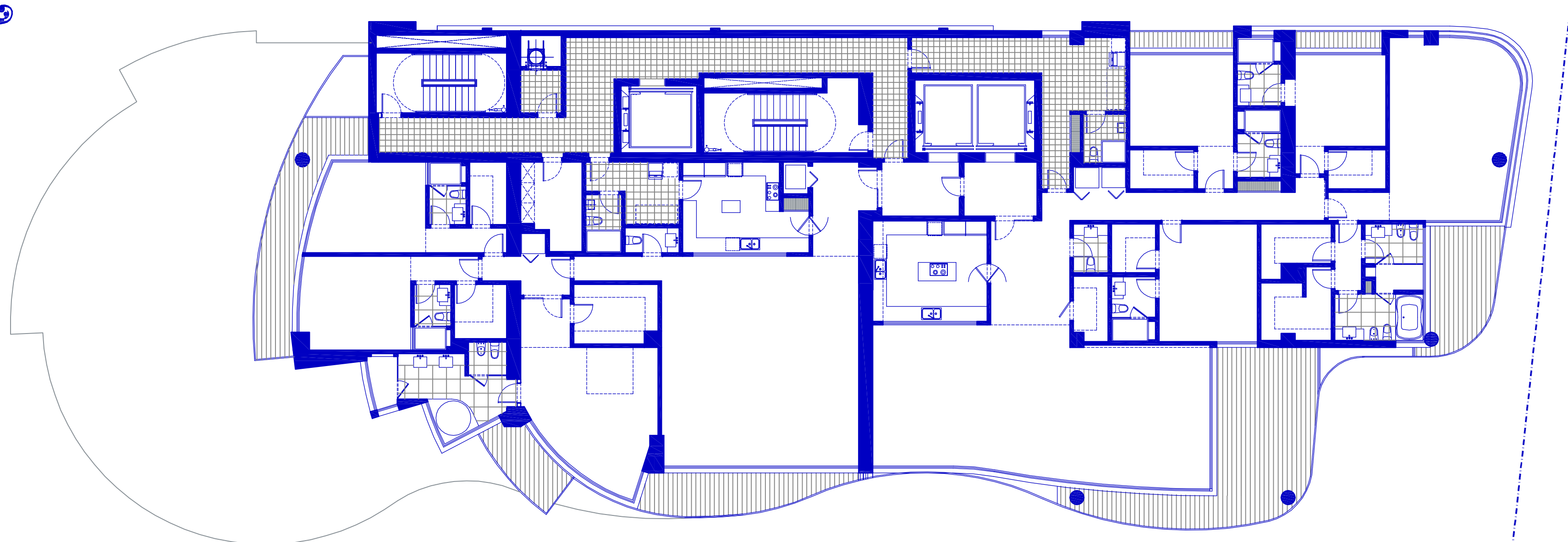
REV. 27 | 03 | 12



SKY VILLA



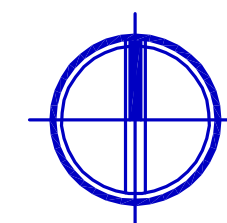
All dimensions are approximate and all floor plans and development plans are subject to change by the developer without notice. Stated dimensions are measured to the exterior boundaries of the exterior walls and the centerline of interior demising walls and in fact vary from the dimensions that would be determined by using the description and definition of the "Unit" set forth in the Declaration (which generally only includes the interior air space between the perimeter walls and excludes interior structural components). The seller reserves the absolute right, in its sole judgment and discretion, to substitute appliances, materials, fixtures, and equipment of equal or great quality or value for those specified.



Linda G Properties - 305-335-7144 - LindaG@LindaGproperties.com - www.LindaGproperties.com

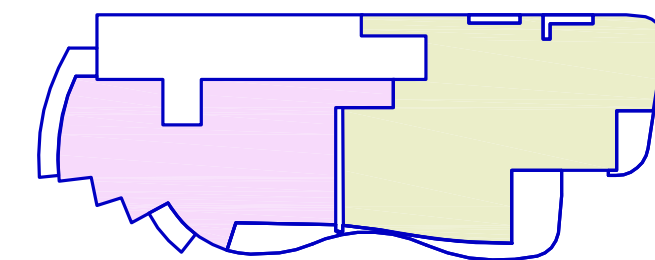
LEVEL  
26° TO 31°

REV. 27 | 03 | 12



Monaco Hotel

Collins Ave.



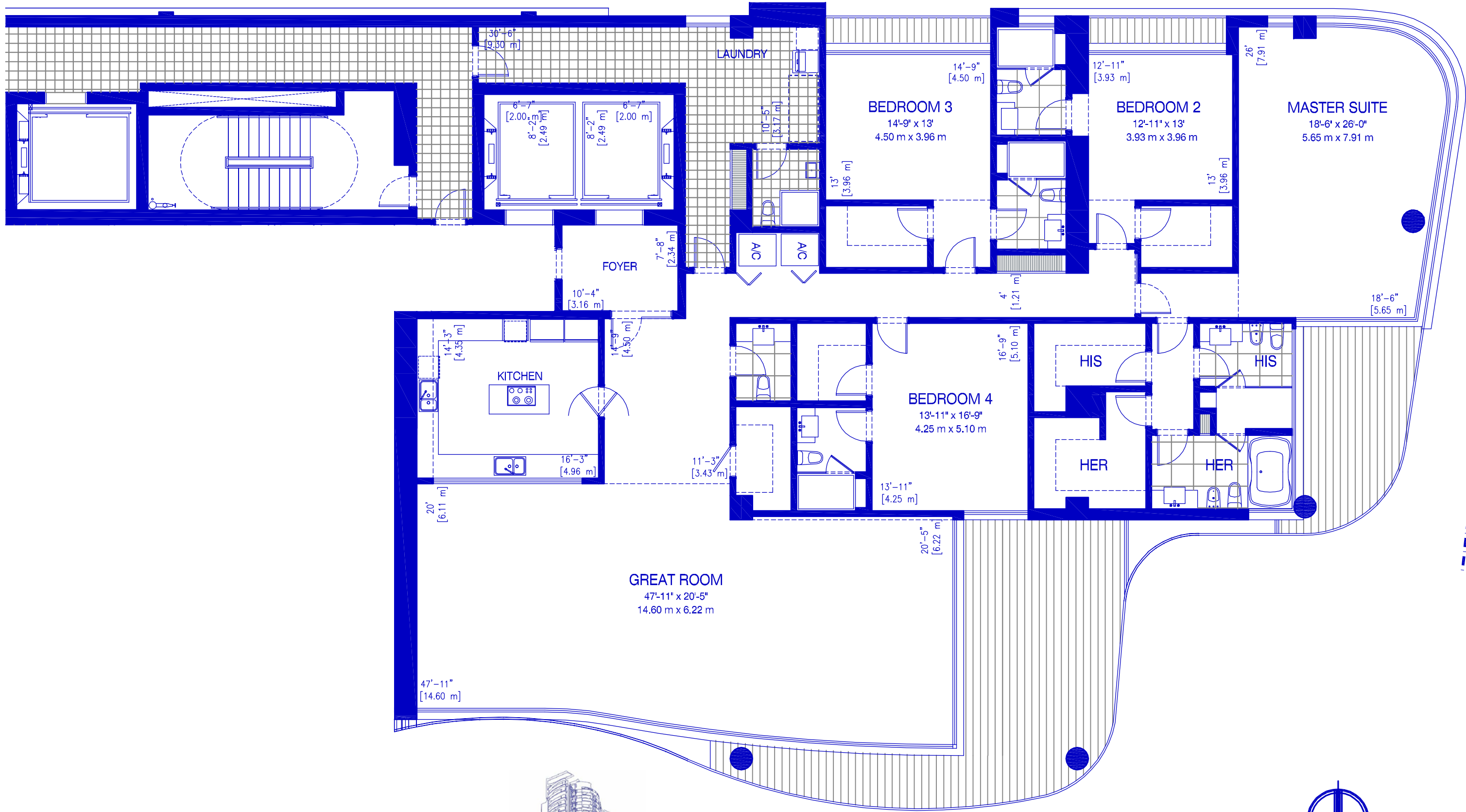
Park

Ocean





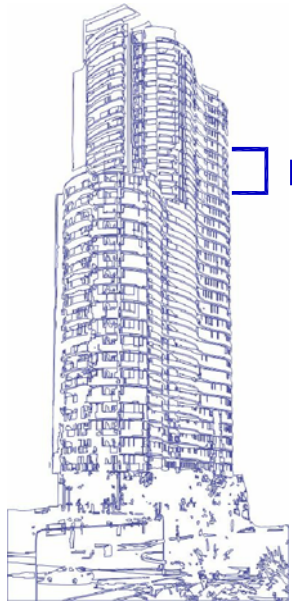
Linda G Properties - 305-335-7144 - LindaG@LindaGproperties.com - www.LindaGproperties.com



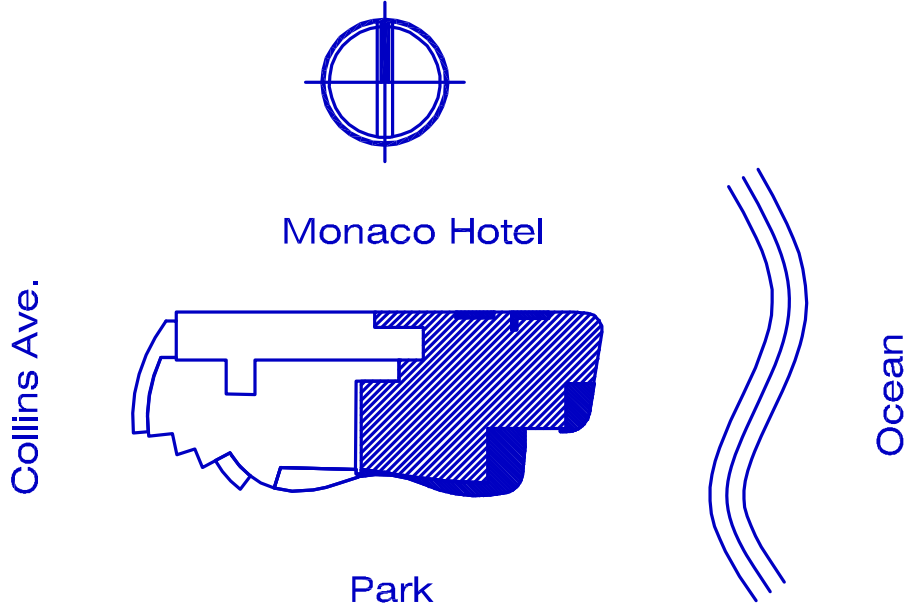
25° TO 31°  
RESIDENCE 01  
4 BEDROOMS / 6 BATH

Interior:	4,305 SF	400 M²
Exterior:	669 SF	62 M²
Total:	4,972 SF	462 M²

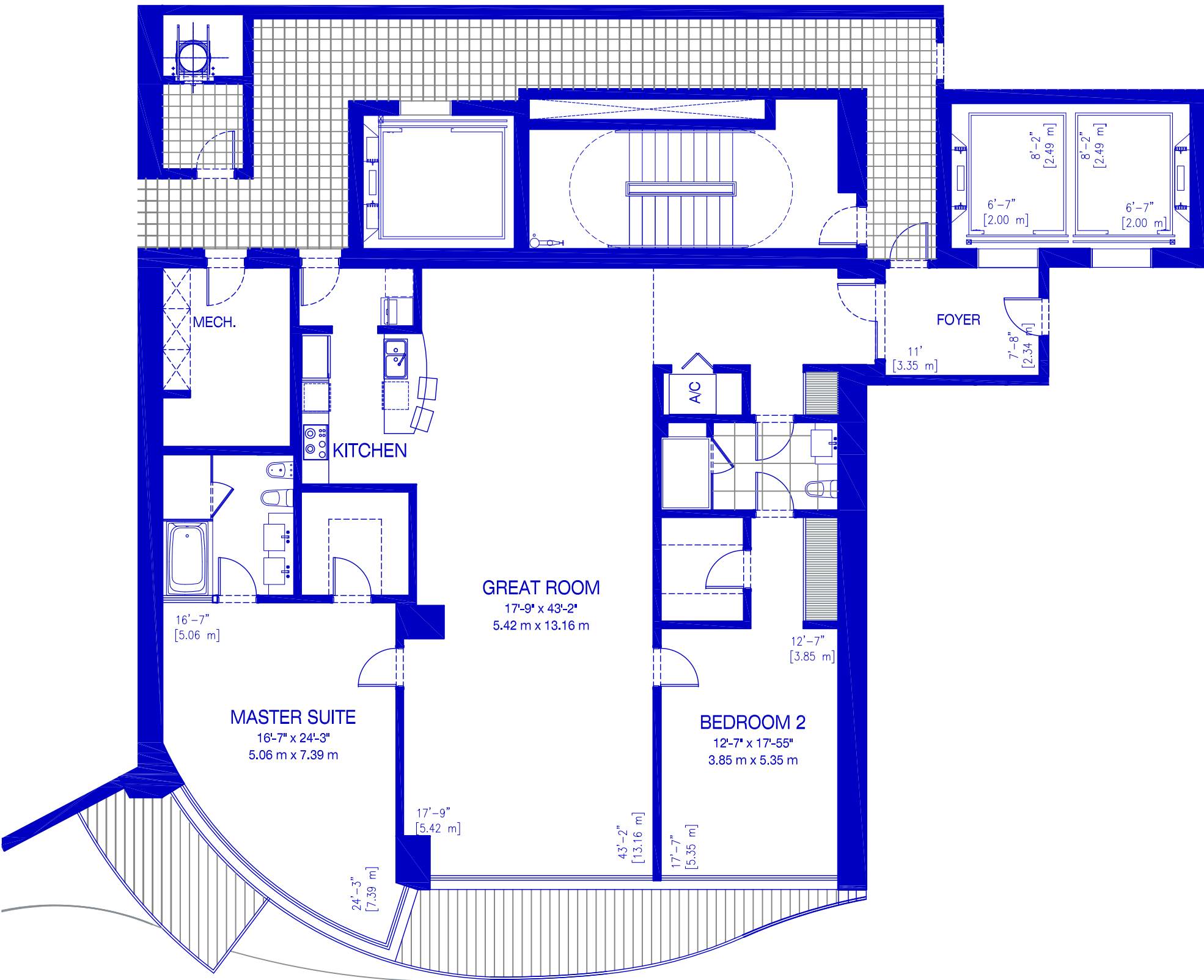
REV. 27 | 03 | 12



RESIDENCES 01



All dimensions are approximate and all floor plans and development plans are subject to change by the developer without notice. Stated dimensions are measured to the exterior boundaries of the exterior walls and the centerline of interior demising walls and in fact vary from the dimensions that would be determined by using the description and definition of the "Unit" set forth in the Declaration (which generally only includes the interior air space between the perimeter walls and excludes interior structural components).The seller reserves the absolute right, in its sole judgment and discretion, to substitute appliances, materials, fixtures, and equipment of equal or great quality or value for those specified.

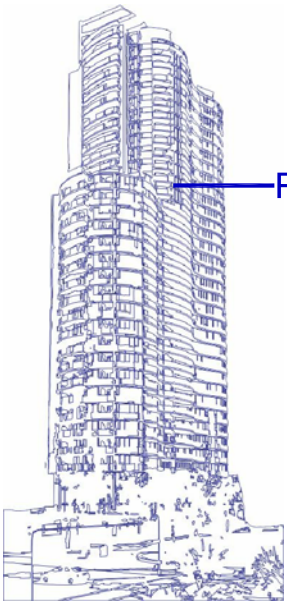


Linda G Properties - 305-335-7144 - [LindaG@LindaGproperties.com](mailto:LindaG@LindaGproperties.com) - [www.LindaGproperties.com](http://www.LindaGproperties.com)

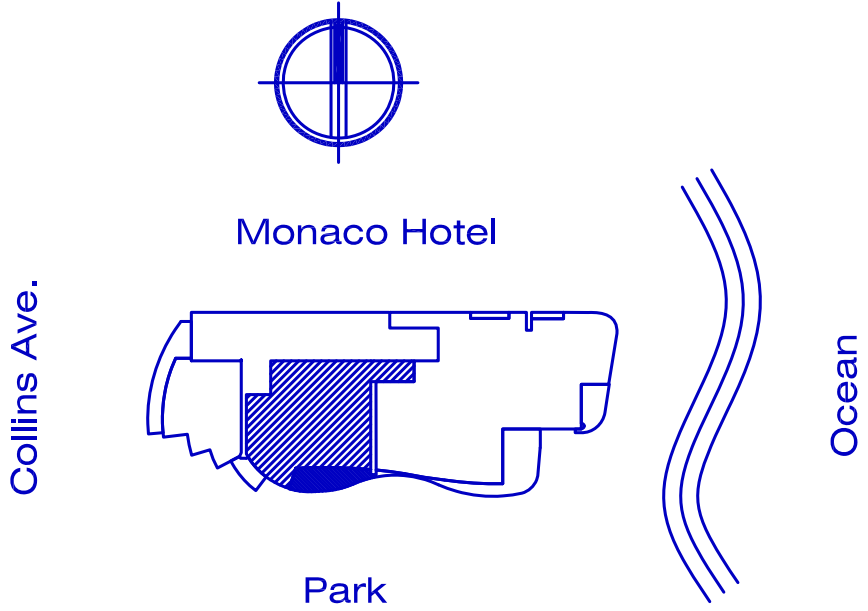
25°  
RESIDENCE 02  
2 BEDROOMS / 2 BATH

Interior:	2,120 SF	197 M²
Exterior:	237 SF	22 M²
Total:	2,357 SF	219 M²

REV. 27 | 03 | 12



RESIDENCES 02



All dimensions are approximate and all floor plans and development plans are subject to change by the developer without notice. Stated dimensions are measured to the exterior boundaries of the exterior walls and the centerline of interior demising walls and in fact vary from the dimensions that would be determined by using the description and definition of the "Unit" set forth in the Declaration (which generally only includes the interior air space between the perimeter walls and excludes interior structural components).The seller reserves the absolute right, in its sole judgment and discretion, to substitute appliances, materials, fixtures, and equipment of equal or great quality or value for those specified.



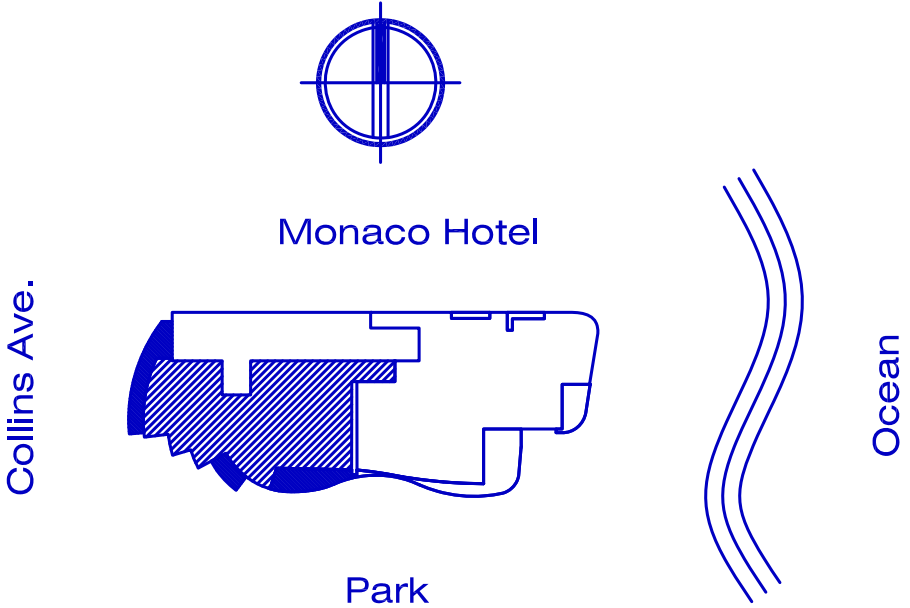
Linda G Properties - 305-335-7144 - [LindaG@LindaGproperties.com](mailto:LindaG@LindaGproperties.com) - [www.LindaGproperties.com](http://www.LindaGproperties.com)

26° TO 31°  
RESIDENCE 02

3 BEDROOMS / 3 (2) 1/2 BATH

Interior:	3,100 SF	288 M²
Exterior:	452 SF	42 M²
Total:	3,552 SF	330 M²

REV. 27 | 03 | 12

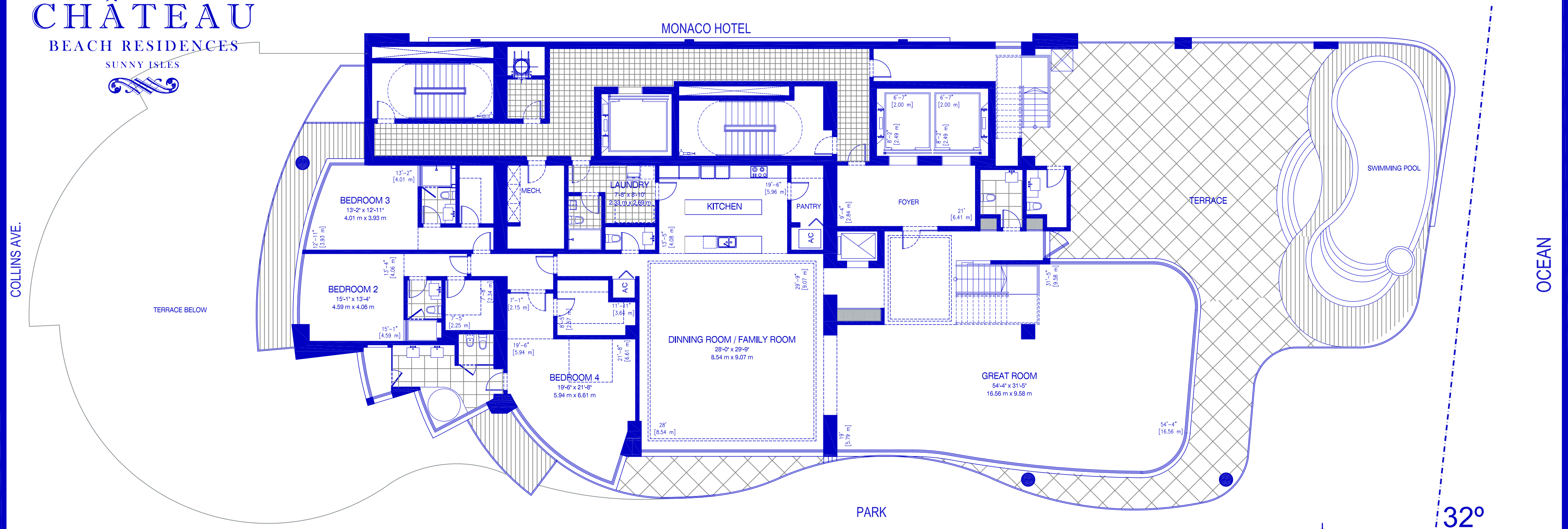


All dimensions are approximate and all floor plans and development plans are subject to change by the developer without notice. Stated dimensions are measured to the exterior boundaries of the exterior walls and the centerline of interior demising walls and in fact vary from the dimensions that would be determined by using the description and definition of the "Unit" set forth in the Declaration (which generally only includes the interior air space between the perimeter walls and excludes interior structural components).The seller reserves the absolute right, in its sole judgment and discretion, to substitute appliances, materials, fixtures, and equipment of equal or great quality or value for those specified.



CHÂTEAU  
BEACH RESIDENCES  
SUNNY ISLES

Linda G Properties - 305-335-7144 - LindaG@LindaGproperties.com - www.LindaGproperties.com



RESIDENCE COLLECTION  
PENT HOUSE VILLA LEVEL 32° & 33°

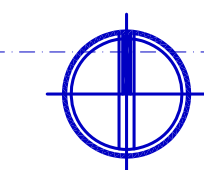
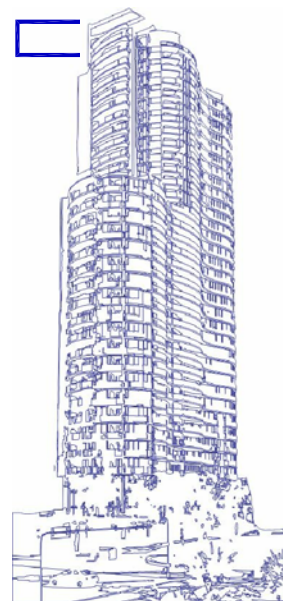
4 BEDROOMS / 6 + (2) 1/2 BATH

Interior: 9,300 SF 864 M<sup>2</sup>  
Exterior: 4,160 SF 386 M<sup>2</sup>

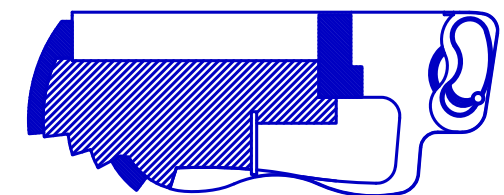
Total:	13,460 SF	1250.00 M <sup>2</sup>
--------	-----------	------------------------

REV. 27 | 03 | 12

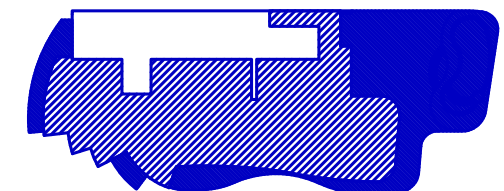
PENT HOUSE VILLA



Monaco Hotel



Collins Ave.



Park

Ocean

All dimensions are approximate and all floor plans and development plans are subject to change by the developer without notice. Stated dimensions are measured to the exterior boundaries of the exterior walls and the centerline of interior demising walls and in fact vary from the dimensions that would be determined by using the description and definition of the "Unit" set forth in the Declaration (which generally only includes the interior air space between the perimeter walls and excludes interior structural components). The seller reserves the absolute right, in its sole judgment and discretion, to substitute appliances, materials, fixtures, and equipment of equal or great quality or value for those specified.





REV. 27 | 03 | 12

## Ocean

All dimensions are approximate and all floor plans and development plans are subject to change by the developer without notice. Stated dimensions are measured to the exterior boundaries of the exterior walls and the centerline of interior demising walls and in fact vary from the dimensions that would be determined by using the description and definition of the "Unit" set forth in the Declaration (which generally only includes the interior air space between the perimeter walls and excludes interior structural components). The seller reserves the absolute right, in its sole judgment and discretion, to substitute appliances, materials, fixtures, and equipment of equal or great quality or value for those specified.