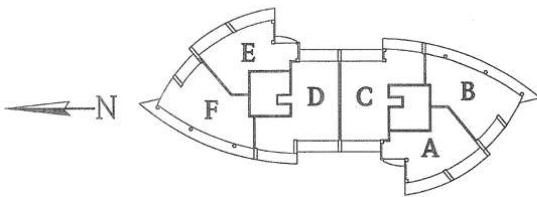




TYPICAL KEY PLAN

Atlantic Ocean View



Tumberry Golf Course View

  
**UNIT A** SOUTH TOWER

**2 BEDROOMS • FAMILY ROOM • 3½ BATHS**

INTERIOR	2,387 Sq. Ft.	222 M <sup>2</sup>
TERRACE	667 Sq. Ft.	62 M <sup>2</sup>
<b>TOTAL RESIDENCE</b>	<b>3,054 Sq. Ft.</b>	<b>284 M<sup>2</sup></b>

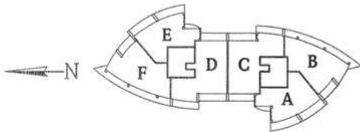
Note: All dimensions are approximate. Plans, materials and specifications are subject to architectural and other revisions at the sole discretion of the developer/builder or architect, or as may be requested by law. Floor plans shown are not to any particular scale. Oral representations cannot be relied upon as correctly stating representations of the developer. For correct representations make reference to this ad and to the documents required by section 718.503 Florida statutes to be furnished by developer to buyer or lessee.





TYPICAL KEY PLAN

Atlantic Ocean View

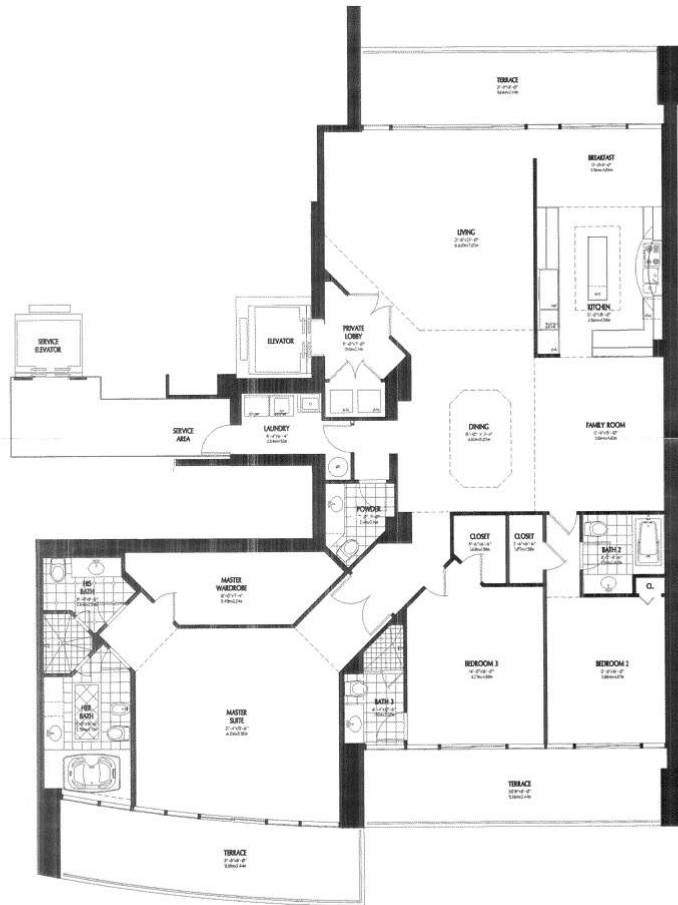


Turnberry Golf Course View



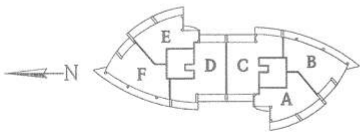
4 BEDROOMS • FAMILY ROOM • 5 BATHS		
INTERIOR	3,320 So. Ft.	308 M <sup>2</sup>
TERRACE	759 So. Ft.	71 M <sup>2</sup>
<b>TOTAL RESIDENCE</b>	<b>4,079 So. Ft.</b>	<b>379 M<sup>2</sup></b>

Note: All dimensions are approximate. Plans, materials and specifications are subject to architectural and other revisions at the sole discretion of the developer/builder or architect, or as may be requested by law. Floor plans shown are not to any particular scale. Oral representations cannot be relied upon as correctly stating representations of the developer. For correct representations make reference to this ad and to the documents required by section 718.503 Florida statutes to be furnished by developer to buyer or lessee.



TYPICAL KEY PLAN

Atlantic Ocean View



Turnberry Golf Course View

**UNIT D** SOUTH TOWER

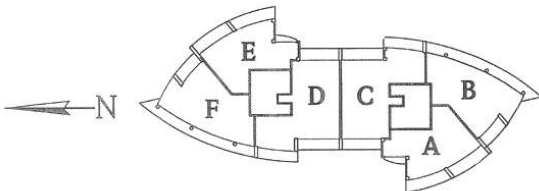
<b>3 BEDROOMS • FAMILY ROOM • 4 1/2 BATHS</b>		
INTERIOR	3,300 Sq. Ft.	307 M <sup>2</sup>
TERRACE	758 Sq. Ft.	70 M <sup>2</sup>
<b>TOTAL RESIDENCE</b>	<b>4,058 Sq. Ft.</b>	<b>377 M<sup>2</sup></b>

Note: All dimensions are approximate. Plans, materials and specifications are subject to architectural and other revisions at the sole discretion of the developer/builder or architect, or as may be requested by law. Floor plans shown are not to any particular scale. Oral representations cannot be relied upon as correctly stating representations of the developer. For correct representations make reference to this ad and to the documents required by section 718.803 Florida statutes to be furnished by developer to buyer or lessee.



TYPICAL KEY PLAN

Atlantic Ocean View

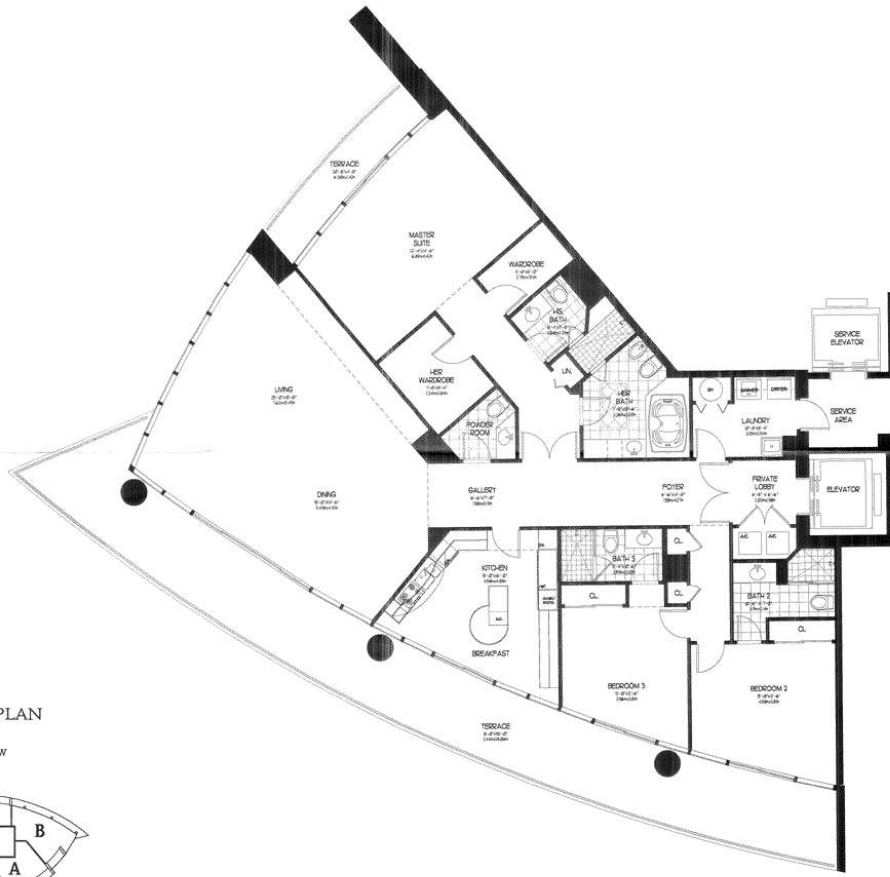


Turnberry Golf Course View



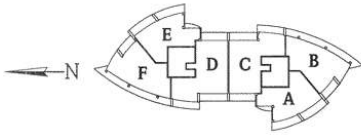
<b>2 BEDROOMS • FAMILY ROOM • 3 1/2 BATHS</b>		
INTERIOR	2,396 Sq. Ft.	223 M <sup>2</sup>
TERRACE	656 Sq. Ft.	61 M <sup>2</sup>
<b>TOTAL RESIDENCE</b>	<b>3,052 Sq. Ft.</b>	<b>284 M<sup>2</sup></b>

Note: All dimensions are approximate. Plans, materials and specifications are subject to architectural and other revisions at the sole discretion of the developer/builder or architect, or as may be requested by law. Floor plans shown are not to any particular scale. Oral representations cannot be relied upon as correctly stating representations of the developer. For correct representations make reference to this ad and to the documents required by section 718.503 Florida statutes to be furnished by developer to buyer or lessee.



TYPICAL KEY PLAN

Atlantic Ocean View

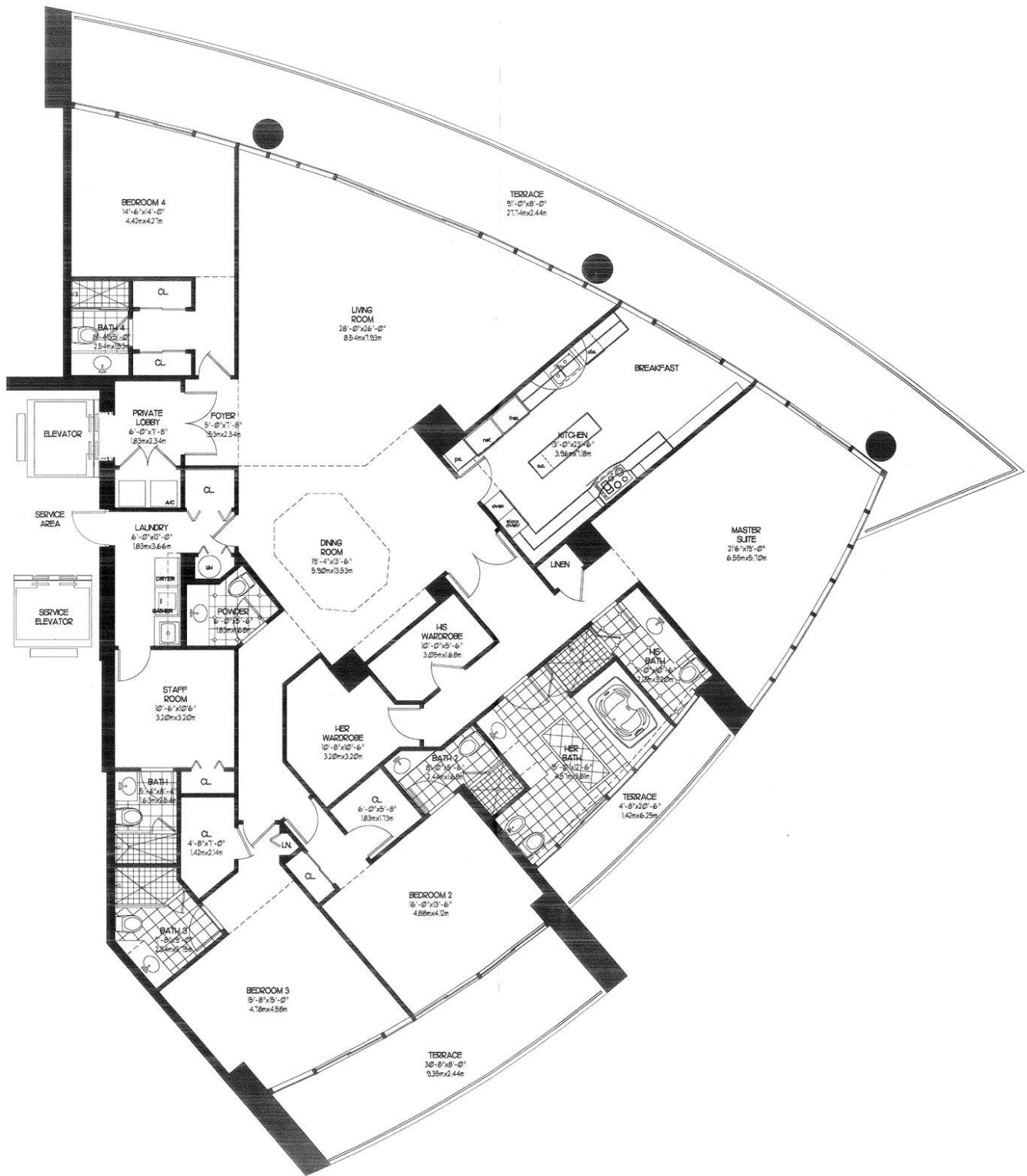


Turnberry Golf Course View

**UNIT F** SOUTH TOWER

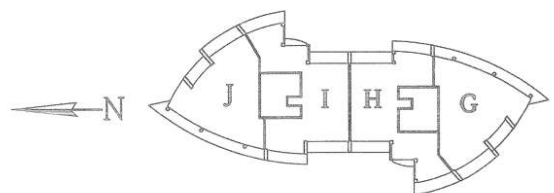
<b>3 BEDROOMS • 4 1/2 BATHS</b>		
INTERIOR	2,886 SQ. FT.	268 M <sup>2</sup>
TERRACE	842 SQ. FT.	78 M <sup>2</sup>
<b>TOTAL RESIDENCE</b>	<b>3,728 SQ. FT.</b>	<b>344 M<sup>2</sup></b>

Note: All dimensions are approximate. Plans, materials and specifications are subject to architectural and other revisions at the sole discretion of the developer/builder or architect, or as may be requested by law. Floor plans shown are not to any particular scale. Oral representations cannot be relied upon as correctly stating representations of the developer. For correct representations make reference to this ad and to the documents required by section 718.303 Florida statutes to be furnished by developer to buyer or lessee.



TYPICAL KEY PLAN

Atlantic Ocean View

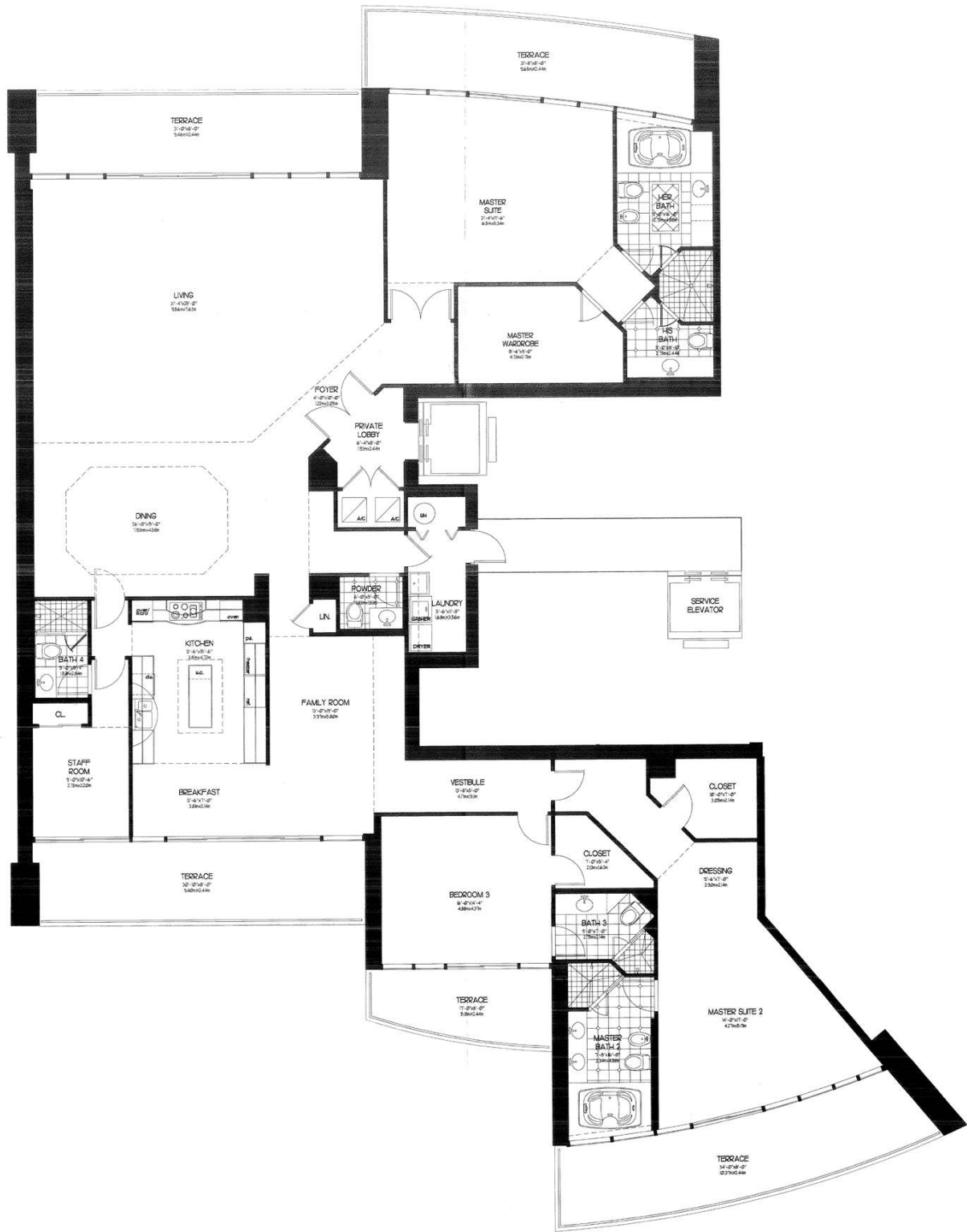


Turnberry Golf Course View

 **PENTHOUSE G** SOUTH TOWER

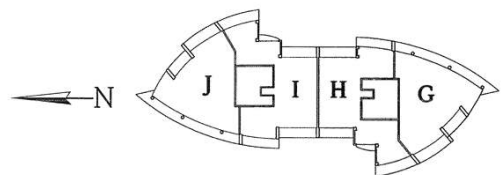
4 BEDROOMS • STAFF ROOM • 6½ BATHS		
INTERIOR	4,070 Sq. Ft.	378 M <sup>2</sup>
TERRACE	1,091 Sq. Ft.	101 M <sup>2</sup>
<b>TOTAL RESIDENCE</b>	<b>5,161 Sq. Ft.</b>	<b>479 M<sup>2</sup></b>

Note: All dimensions are approximate. Plans, materials and specifications are subject to architectural and other revisions at the sole discretion of the developer/builder or architect, or as may be requested by law. Floor plans shown are not to any particular scale. Oral representations cannot be relied upon as correctly stating representations of the developer. For correct representations make reference to this ad and to the documents required by section 718.503 Florida statutes to be furnished by developer to buyer or lessee.



TYPICAL KEY PLAN

Atlantic Ocean View



Turnberry Golf Course View

  
**PENTHOUSE H** SOUTH TOWER

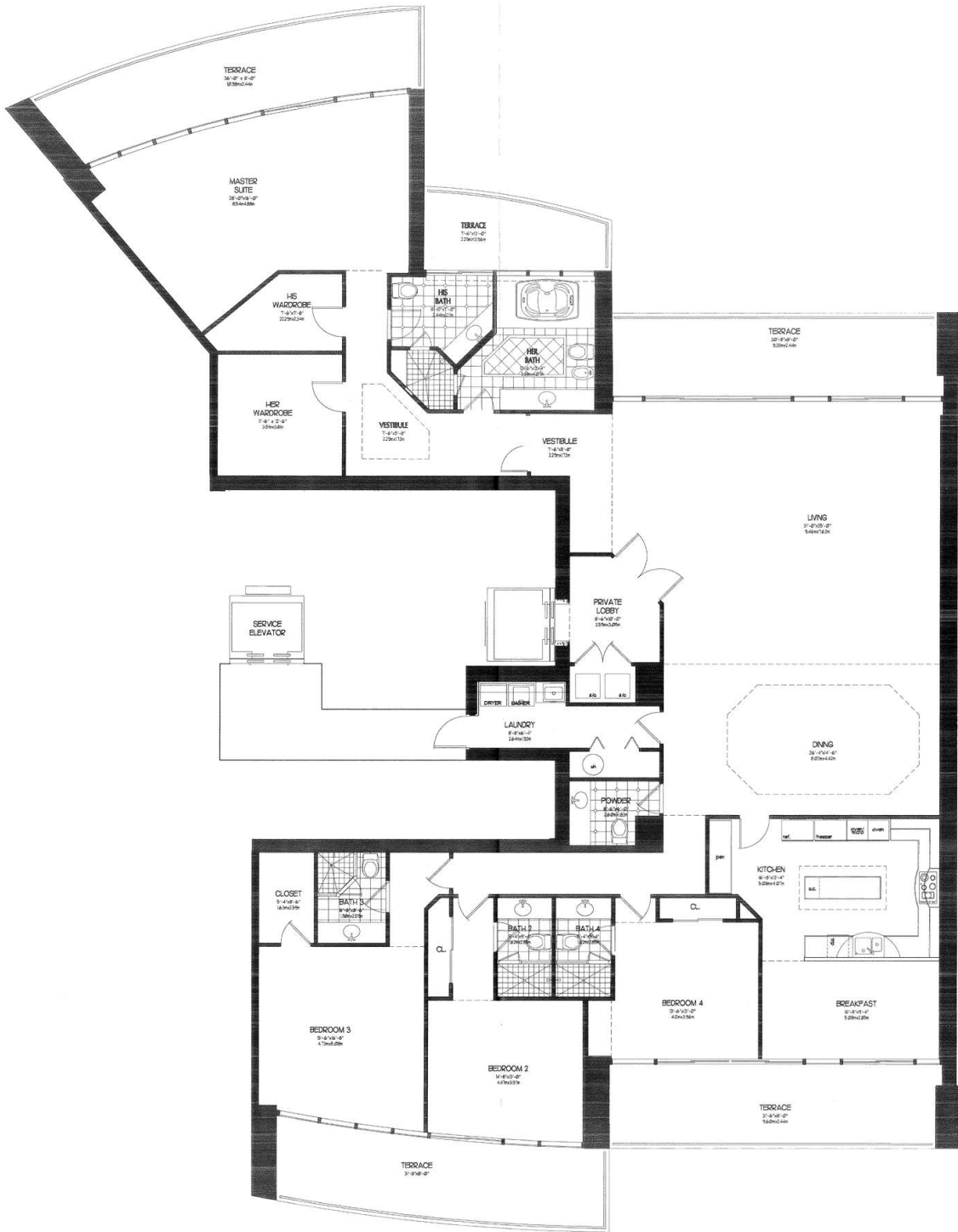
3 BEDROOMS • FAMILY ROOM • STAFF ROOM • 5 1/2 BATHS

INTERIOR 4,511 Sq. Ft. 419 M<sup>2</sup>

TERRACE 1,162 Sq. Ft. 108 M<sup>2</sup>

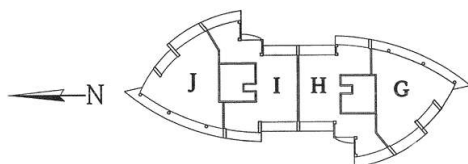
TOTAL RESIDENCE 5,673 Sq. Ft. 527 M<sup>2</sup>

Note: All dimensions are approximate. Plans, materials and specifications are subject to architectural and other revisions at the sole discretion of the developer/builder or architect, or as may be requested by law. Floor plans shown are not to any particular scale. Oral representations cannot be relied upon as correctly stating representations of the developer. For correct representations make reference to this ad and to the documents required by section 718.503 Florida statutes to be furnished by developer to buyer or lessee.



TYPICAL KEY PLAN

Atlantic Ocean View

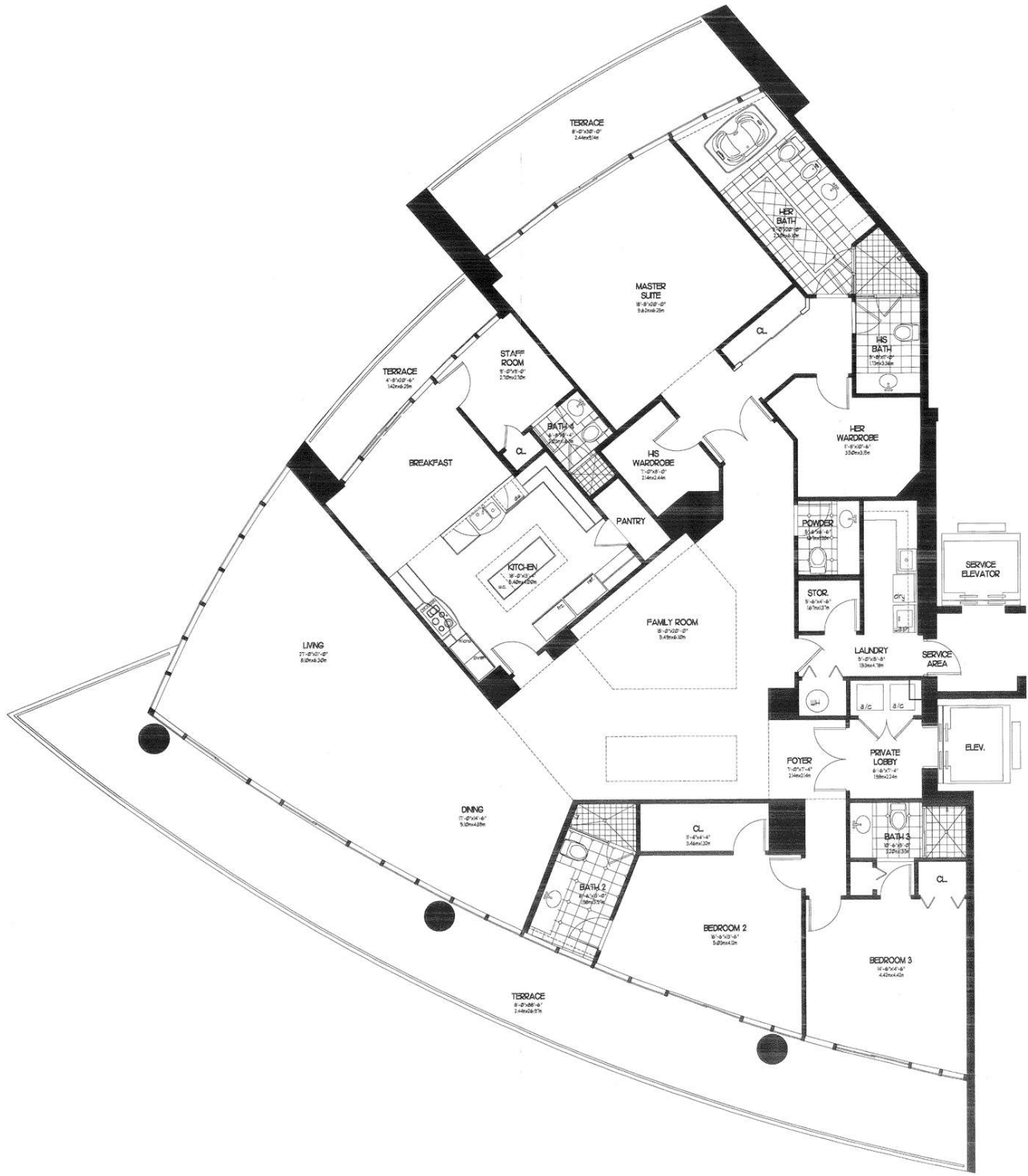


Turnberry Golf Course View

 **PENTHOUSE I** SOUTH TOWER

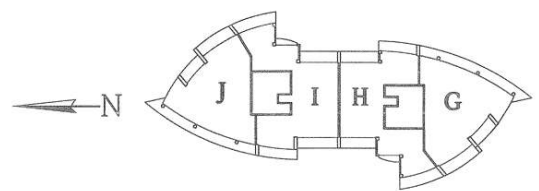
<b>4 BEDROOMS • 5 1/2 BATHS</b>		
INTERIOR	4,684 Sq. Ft.	435 M <sup>2</sup>
TERRACE	1,147 Sq. Ft.	107 M <sup>2</sup>
<b>TOTAL RESIDENCE</b>	<b>5,831 Sq. Ft.</b>	<b>542 M<sup>2</sup></b>

Note: All dimensions are approximate. Plans, materials and specifications are subject to architectural and other revisions at the sole discretion of the developer builder or architect, or as may be requested by law. Floor plans shown are not to any particular scale. Oral representations cannot be relied upon as correctly stating representations of the developer. For correct representations make reference to this ad and to the documents required by section 718.503 Florida statutes to be furnished by developer to buyer or lessee.



TYPICAL KEY PLAN

Atlantic Ocean View



Turnberry Golf Course View

**PENTHOUSE J** SOUTH TOWER

3 BEDROOMS • FAMILY ROOM • STAFF ROOM • 5 1/2 BATHS

INTERIOR	3,951 Sq. Ft.	367 M <sup>2</sup>
TERRACE	1,060 Sq. Ft.	98 M <sup>2</sup>
TOTAL RESIDENCE	5,011 Sq. Ft.	465 M <sup>2</sup>

Note: All dimensions are approximate. Plans, materials and specifications are subject to architectural and other revisions at the sole discretion of the developer builder or architect, or as may be requested by law. Floor plans shown are not to any particular scale. Oral representations cannot be relied upon as correctly stating representations of the developer. For correct representations make reference to this ad and to the documents required by section 718.503 Florida statutes to be furnished by developer to buyer or lessee.

